

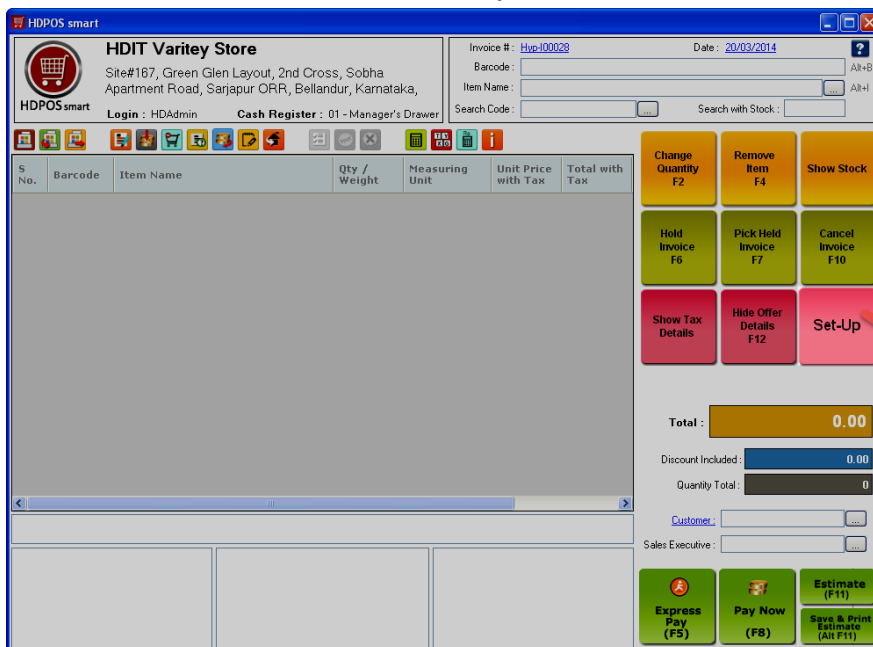
What do I need to do to start sending SMS – using SMS Dongle?

Sending and receiving SMSes are become a very integral part of our life today. We understand this need of reaching out to customers and suppliers as soon as a transaction is made and have hence provided support for sending SMS in HDPOS smart.

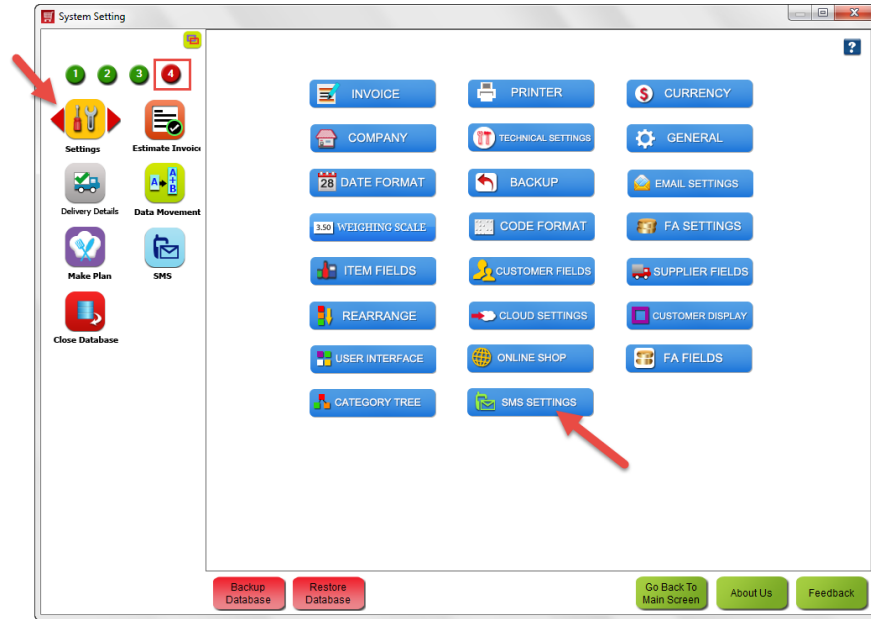
Below are steps that will show you how you can start sending SMS

Let's start

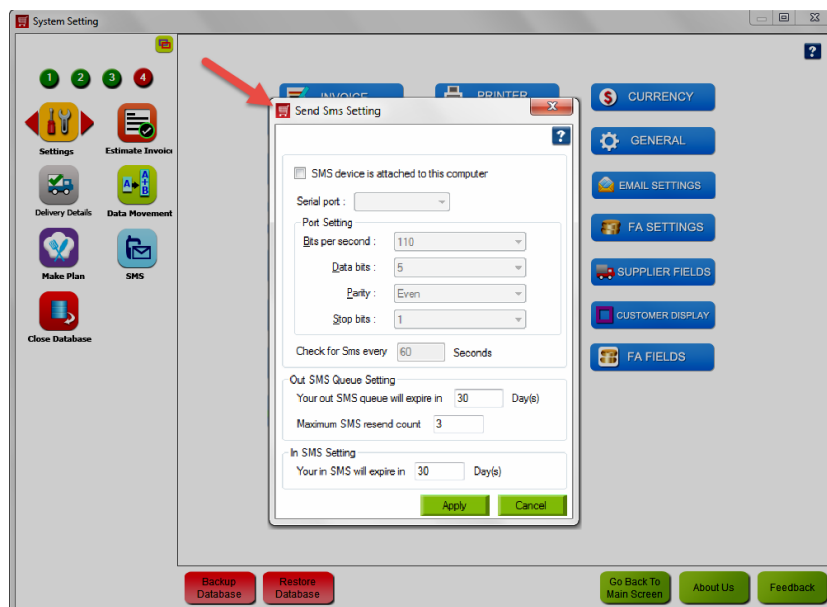
- Run **HDPOS smart**
- From the **Main Invoice Screen** select **Setup**



- From the **4th** page of **Setup** Select **Settings – SMS settings**



- Clicking on **SMS Settings** will bring up the **Send SMS Settings** Form



- **Attach your SMS Device** to your system
- Click on the **Check Box** which says “**SMS device is attached to this computer**”



Send Sms Setting

SMS device is attached to this computer

Serial port : COM1

Port Setting

Bits per second : 2400

Data bits : 8

Parity : None

Stop bits : 1

Check for Sms every 60 Seconds

Out SMS Queue Setting

Your out SMS queue will expire in 1 Day(s)

Maximum SMS resend count 1

In SMS Setting

Your in SMS will expire in 1 Day(s)

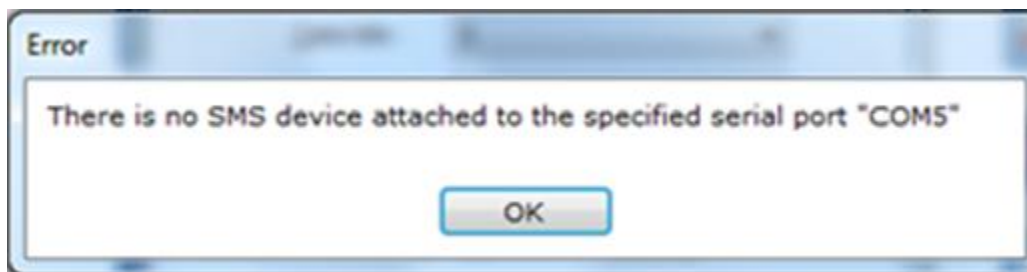
Apply Cancel

- Once the Check Box is ticked, it will enable some of the settings (i.e. Serial Port, Bits per second, Data bits, Parity, Stop bits)
- Click on **Serial Port drop down** to see all the available Serial Ports.



- **Select one port at a time** and hit **Apply** button and the software will check if the port is available or not (Leave the rest of the **Port Settings** as it is).

If the port is not available it will give you a message saying “ **There is no SMS device attached to the specified serial port COM5**”



- Once the right port is selected, this software is ready to send SMSes for you.

Additional settings

Out SMS Queue Setting:



Out SMS Queue Setting

Your out SMS queue will expire in Day(s)

Maximum SMS resend count

You can leave the default values here.

Your out SMS queue will expire in ___ days: This allows you to set how many days the software will keep your outgoing SMSes. Once the specified number of days has reached the application will delete those messages by itself.

Maximum SMS resend count__: This is the number of times the application will try to resend the sms incase if Fails.

In SMS Settings:

In SMS Setting

Your in SMS will expire in Day(s)

Your in SMS will expire in ___ days: This allows you to set how many days the software will keep your incoming SMSes. Once the specified number of days has reached the application will delete those messages by itself.