

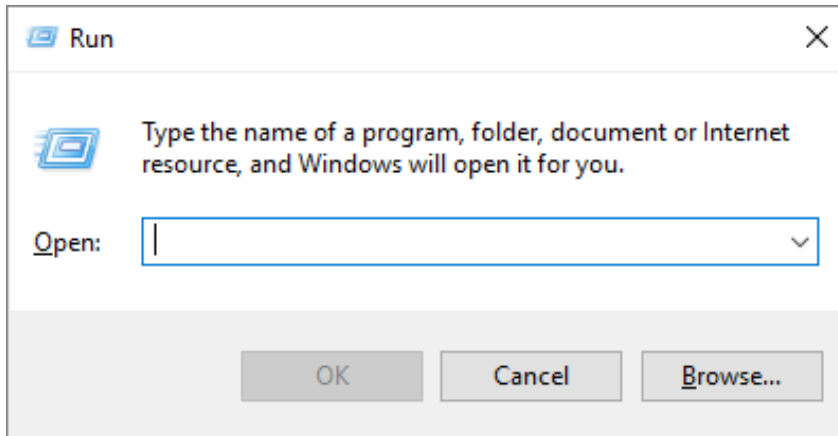
## Problem - Unable to login to the application as SQL Server is not running



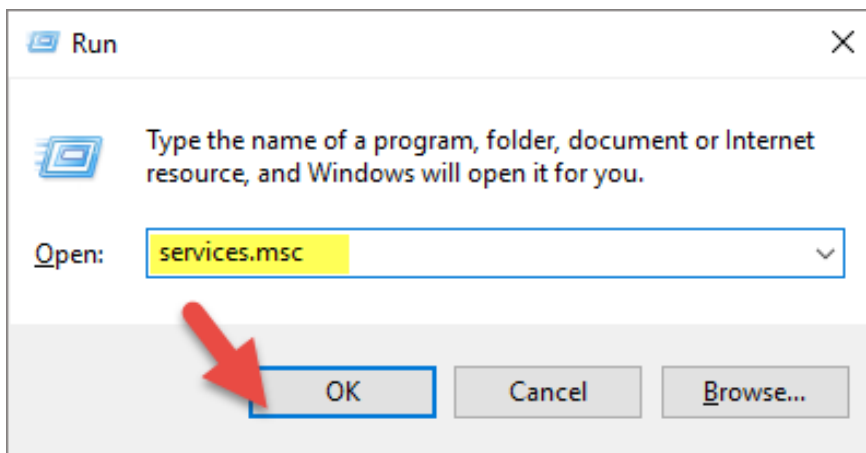
HDPOS smart Tutorials

### Solution: Start the SQL Server service to resolve the issue

1. Press **Win +R** keys (or goto **Start** and select **Run**) to open the **Run** dialog box.

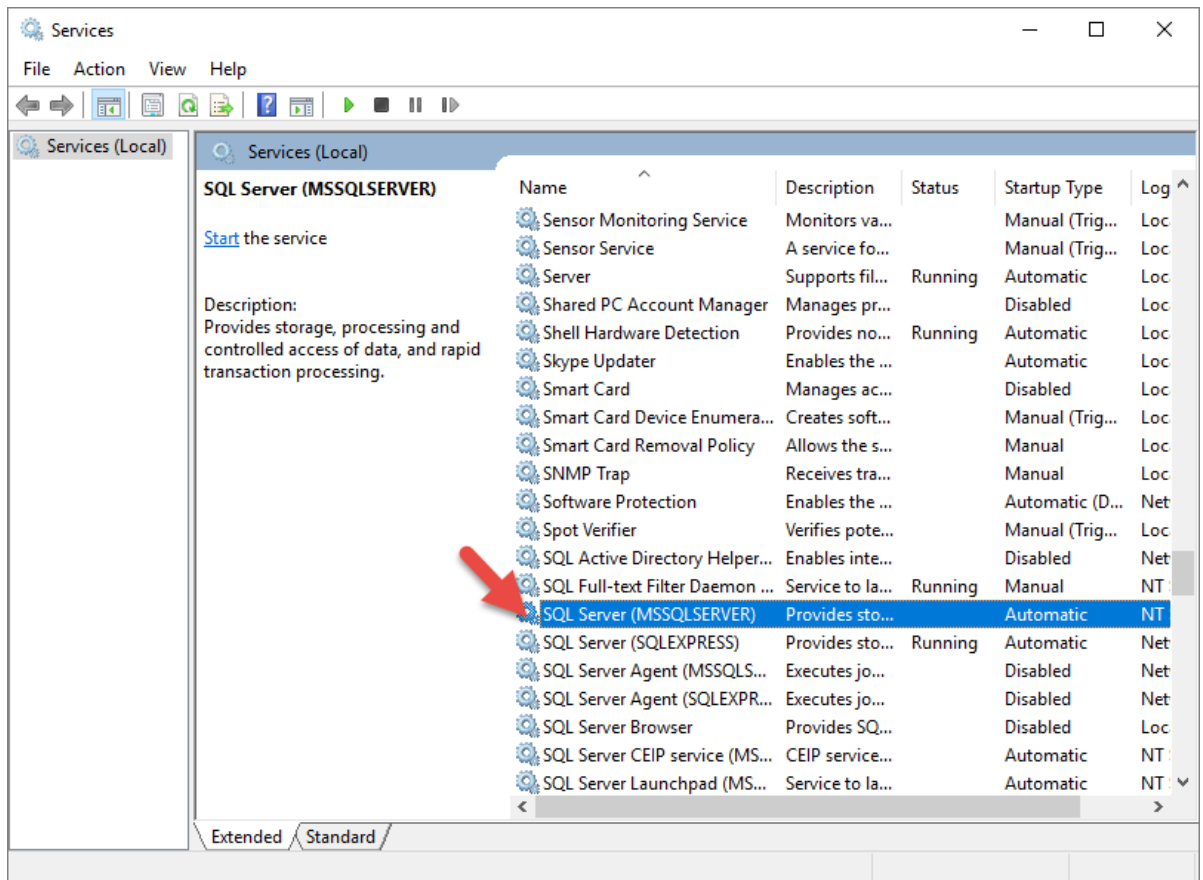


2. Enter '**services.msc**' and click on **OK**.



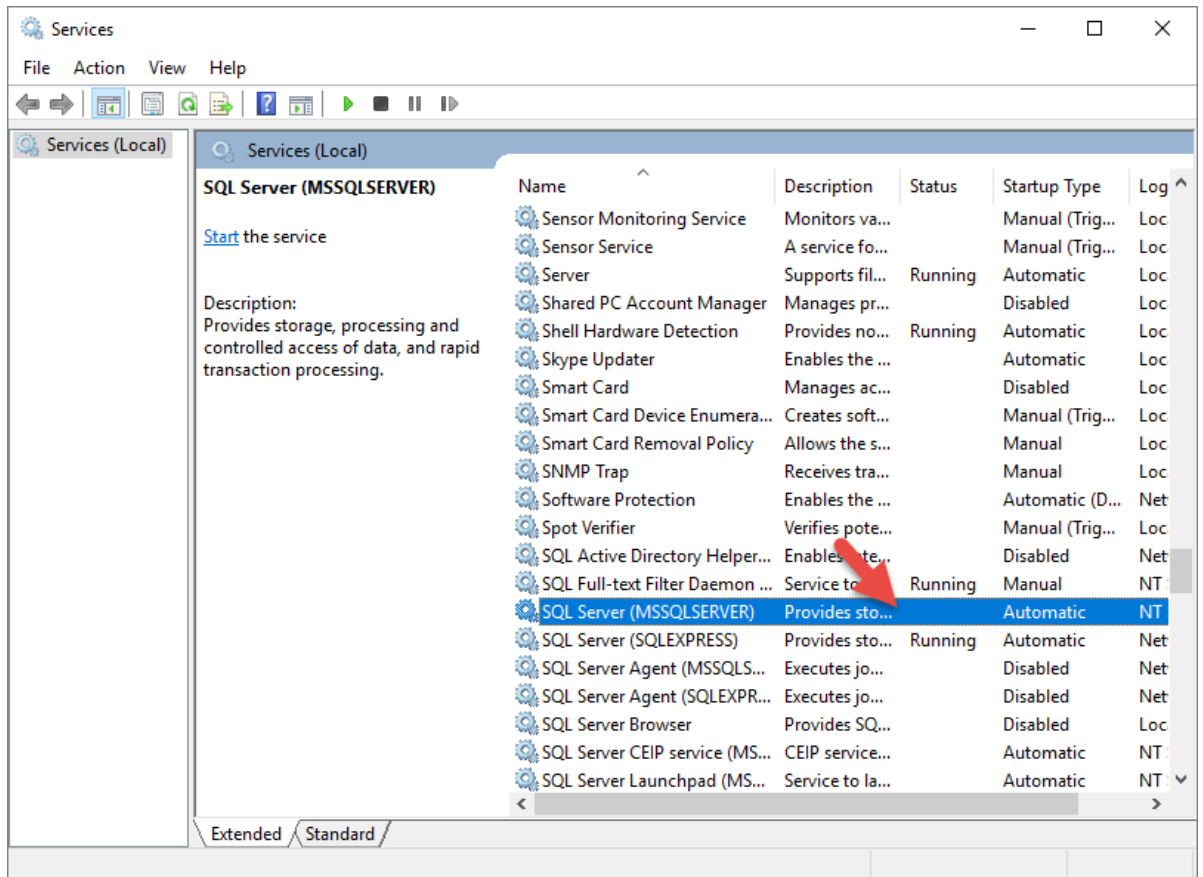


3. Look for SQL Server services in the services window. The name could be **SQL Server (MSSQLSERVER)** or **SQL Server (SQLEXPRESS)**.





4. Check the status of the selected service.



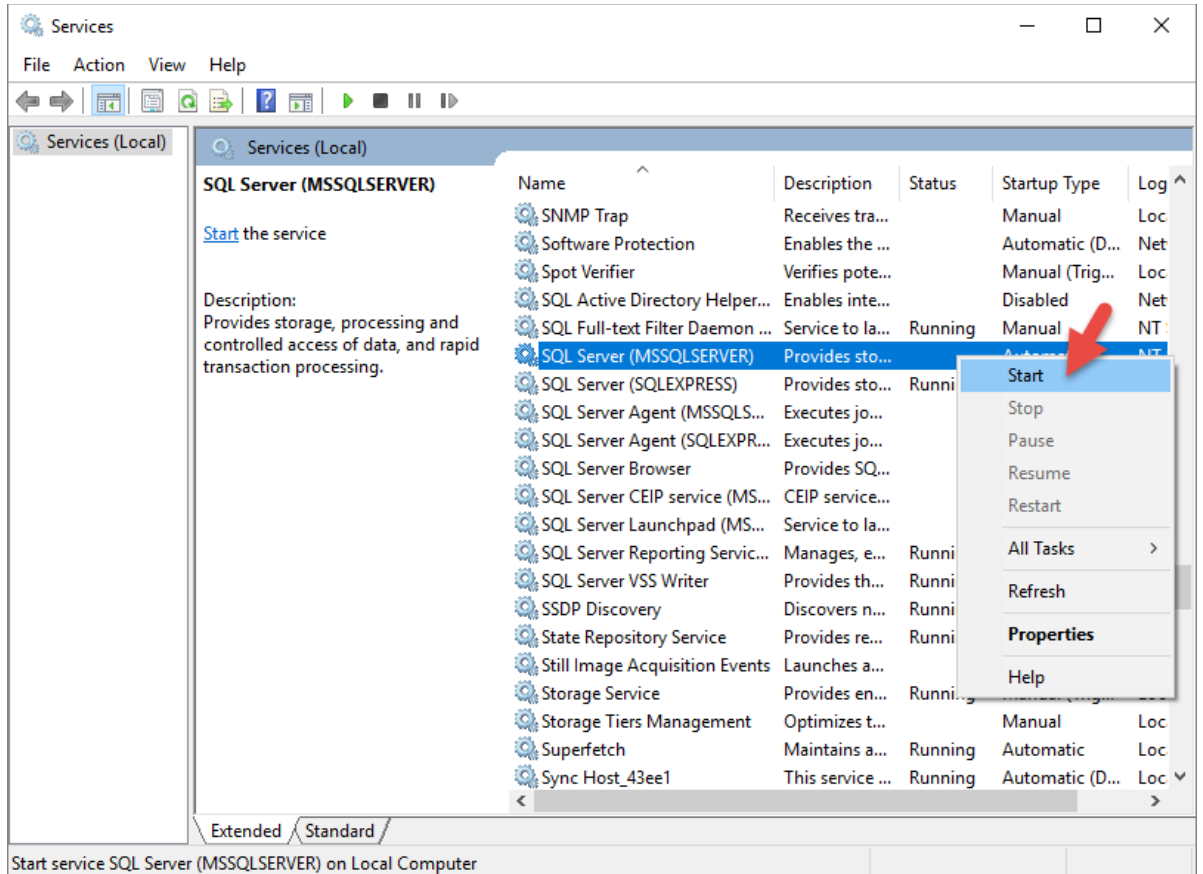
- i. The status is displayed blank if the service is not running.
- ii. If the service is running, the status is displayed as 'Running' or 'Started'.

**Note:** The status is displayed as 'Running' in Windows 8 and Windows 10, whereas the status is displayed as 'Started' in Windows XP and Windows 7.

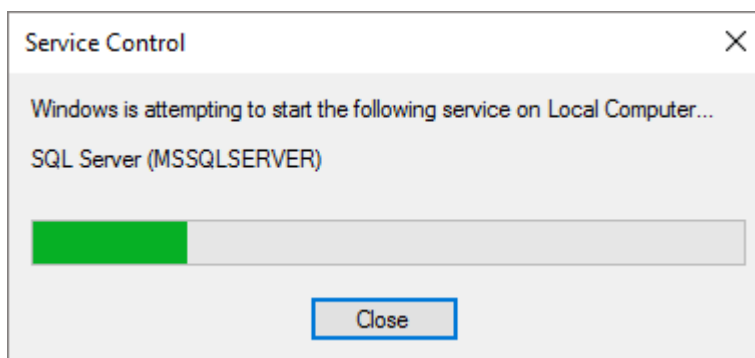




5. If it is not running, right-click on the service, and click on **Start**.



6. Wait for the service to be started.





7. Make sure the status is changed to **Running** or **Started**.

