

Cloud Offline Settings



HDPOS smart Tutorials

- This Option is only available for cloud users and will not be visible for non cloud users.
- This option allows you to work in offline mode without having to be connected to the internet all the time. Clicking on Offline setting will bring up the below screen with 2 options.

Offline Setting

Work as Disconnected Terminal

Work as Online/Offline Terminal (Work Offline when network is not available)

Sync Interval : 10 minutes

Apply Cancel

- Work As Disconnected Terminal.
- Work as Online/ Offline Terminal (Work Offline when network is not available).

Disconnected Terminal:

- Select the option **Work As Disconnected Terminal** to work in disconnected mode and sync your data to the server at the end of the day or whenever it is convenient for you.
- Selecting this option:
 - Allows you to work in offline mode where you do not need internet connection.
 - Internet connection would only be required to sync the data
- Selecting this option and clicking on **Apply** will bring up the below screen:

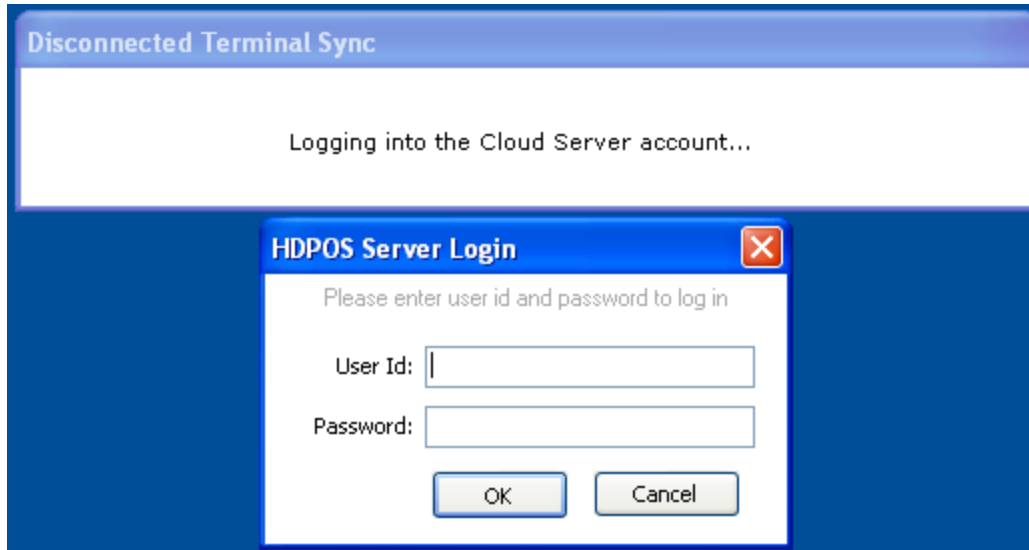
Work as Disconnected Client?

Do you want to work as a Disconnected Client?

Do you want to continue?

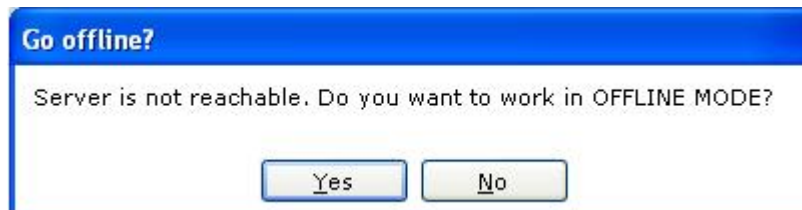
Yes No

- Clicking on **Yes** will restart the application and sync the server data to your local machine. Once the application restarts you will be in disconnected mode.
- After this you may be prompted for the Server login.
Note: When you login in disconnected mode you will have to login with the default HDPOS username and password i.e HDAdmin / @HDAdmin (only the first time).



Online/Offline Terminal:

- Select the option **Work as Online/Offline Terminal when** you are regularly working online and are connected to the internet, however in case of loss of internet connection you may require to continue working in offline mode.
- If you choose to work in Online/ Offline mode
 - You would need to specify a sync interval. By default it is set to 10 minutes (minimum is 5 minutes). You can change it if required.
 - When your server is not reachable you will see the below message.



- Select **Yes**. This will ask you to restart the application so that it can connect to the local database on the client machine.
- Login as you would normally do. The application will open with restricted functionalities in offline mode.



Here are a few things you would need to do before selecting any of the Offline Settings options.

- If you have a very large database then you may want to install SQL server 2008 or above versions of SQL Server on the client machines so that you do not experience any slowness in the application when working in offline /disconnected mode.
- If you are using multiple Cash Registers in the same business location, ensure that all the Cash Registers in the same business location have a unique Cash register Prefix.
 - From **Set-Up**, select Cash **Register**.
 - Click on **Add / Edit Cash Register** and in the screen of cash register- enter a unique Cash Register Prefix for every cash register.

Add New Cash Register

Business Location : HDIT Variety Store

Cash Register Number : 03

Cash Register Name : CR3

Cash Register Prefix : CR3

For Login :

Is Main Cash Register

Is Adjustment Cash Register

Create Cancel

- Form **Setup** → **Settings** → **Code Format**, change the code format for
 - **Invoice**
 - **Invoice Reference No**
 - **Sales Return** as shown below.



Code Format

Select Type : Invoice

Current Code Format : FR-I-{CASHREGISTER}-201300001

Business Location : Hyper Drive Information Technology

Business Location Prefix : FR


Select Prefix Template : CASHREGISTER

Document Prefix : -I-{CASHREGISTER}

Minimum Code Length : 8

Code Start Number : 201300001

Sample Code : FR-I-CRP-201300000

Sample Barcode Format : 

* CRP will be replaced by current Cash Register Prefix.

Apply Cancel

- Select 'Select Type' as Invoice/ Invoice Reference Number/ Sales Return.
- Select 'Prefix Template' as Cash Register (this will add the cash register prefix to the invoice/ invoice ref. No/ Sales Return).

