

How do I transfer stock from my store to my franchise store?



HDPOS smart Tutorials

To transfer stock from your store to your franchise store, follow the steps below.

1. Run HDPOS smart. Click on **Set-Up**.

The screenshot shows the HDPOS smart interface for 'Hyper Drive Garment Store'. The interface includes a header with store information, a toolbar with various icons, and a main area with a table and several buttons. The 'Set-Up' button is highlighted with a dashed arrow pointing to a separate 'Set-Up' button on the right side of the screen.

S No.	Barcode	Item Name	Qty / Weight	Measuring Unit	Unit Price with Tax	Total with Tax
-------	---------	-----------	--------------	----------------	---------------------	----------------

Buttons: Change Quantity (F2), Remove Item (F4), Show Stock, Hold Invoice (F6), Pick Held Invoice (F7), Cancel Invoice (F10), Show Tax Details, Show Offer Details (F12), Set-Up, Total: 0.00, Discount Included: 0.00, Quantity Total: 0, Customer, Sales Executive, Express Pay (F5), Pay Now (F8), Estimate (F11), Save & Print Estimate (Alt F11).

2. From 2nd page, click on Godown. From the Manage Godown screen, click on Add New Godown button and create a godown for your franchise store as shown below.

The screenshot shows the 'Manage Godown' screen with the 'Add New Godown' dialog box open. The dialog box contains fields for 'Godown Name' and 'Description', and a checkbox for 'Is Active'. The 'Add New Godown' button is highlighted with a green dashed arrow.

Godown Name: HDIT Franchise Store

Description:

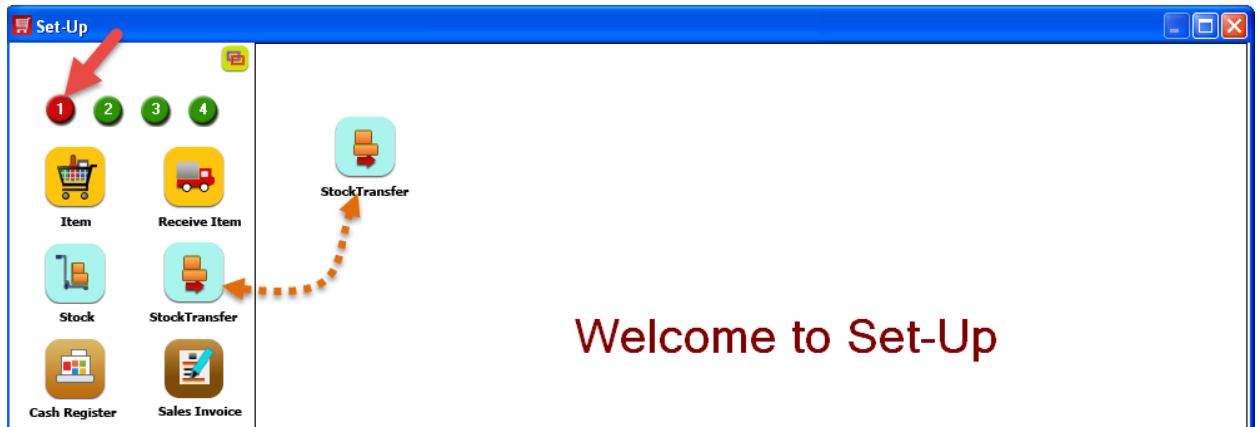
Is Active


Buttons: Save (F8), Cancel

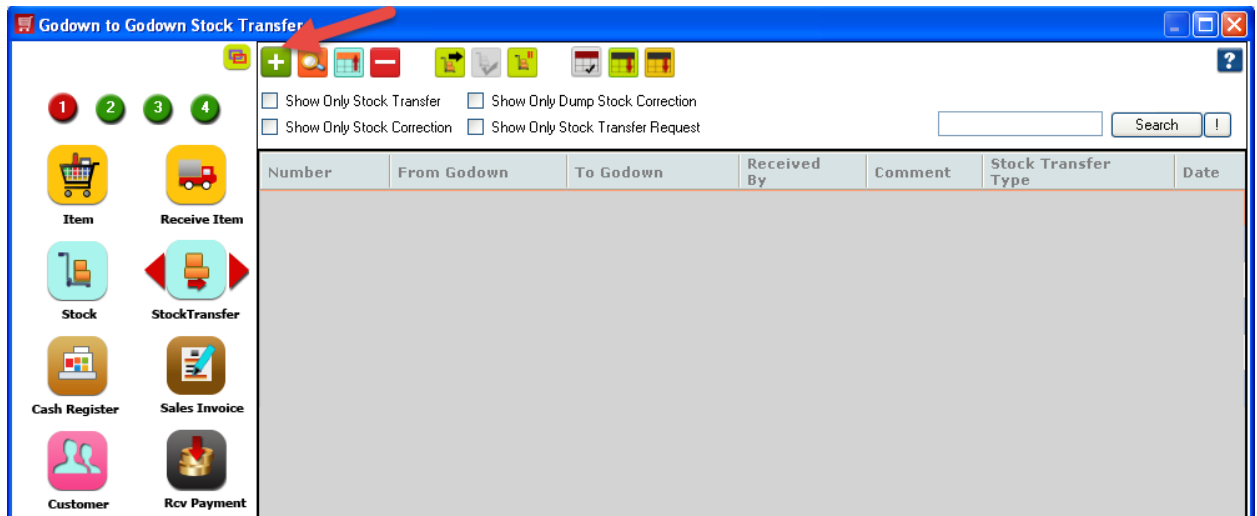
Is Used For Stock Correction	Is Active	Description
No	Yes	Default Godown
Yes	Yes	Stock Correction Godown
No	Yes	



3. From 1st page, click on **Stock Transfer**.



4. From **Godown to Godown Stock Transfer** screen, click on  **Add Stock Transfer** button.



5. **Godown to Godown Stock Transfer** screen will be opened.
 - a. **From Godown:** Enter the godown of your store.
 - b. **To Godown:** Enter the godown of your franchise store.
 - c. **Received By:** Enter the **employee's name** who's receiving the stock.
 - d. Select the **items** that you want to transfer and enter the **quantity** how much you want to transfer for each item in the **Transferring Quantity/Weight** column.
 - e. You can see another column **Available Quantity** which shows current stock in your store godown.
 - f. Click on **Save**.



Godown To Godown Stock Transfer

Select Business Location : HDIT Variety Store

Stock Transfer Number : HD-ST00002 Date : 04/06/2015 Do Not Show Negative Stock Warning Message

Barcode : _____ From Godown : HD Add All Items

Item Name : _____ To Godown : HDIT Franchise Store

Search Code : _____ Received By : Uma M

Show Images

S No.	Barcode	Search Code	Item Name	Transferring Qty / Weight	Sales Measuring Unit	Available Quantity
1	T00012		Blue Stripped Shirt	50.00	Qty	99.00
2	T00007		Donald Duck soft toy	22.00	Qty	49.00
3	T00016		Girl's Frock	45.00	Qty	100.00
4	T00015		Fabindia Women's Skirt	17.00	Qty	150.00
5	T00017		Ishin Floral Print Cotton Sari	45.00	Qty	100.00
6	T00029		UCB Boys Jeans	36.00	Qty	100.00

Change Quantity F2 Search Item F3 Remove Item F4 Barcode F6 Item Grid F9

Hold & Print Hold (F7) Save & Print (F5) Save (F8) Cancel

6. Stock Transfer entry will be shown to you as below. Select the stock transfer entry and click on

click on **Export Item** from the tool strip.

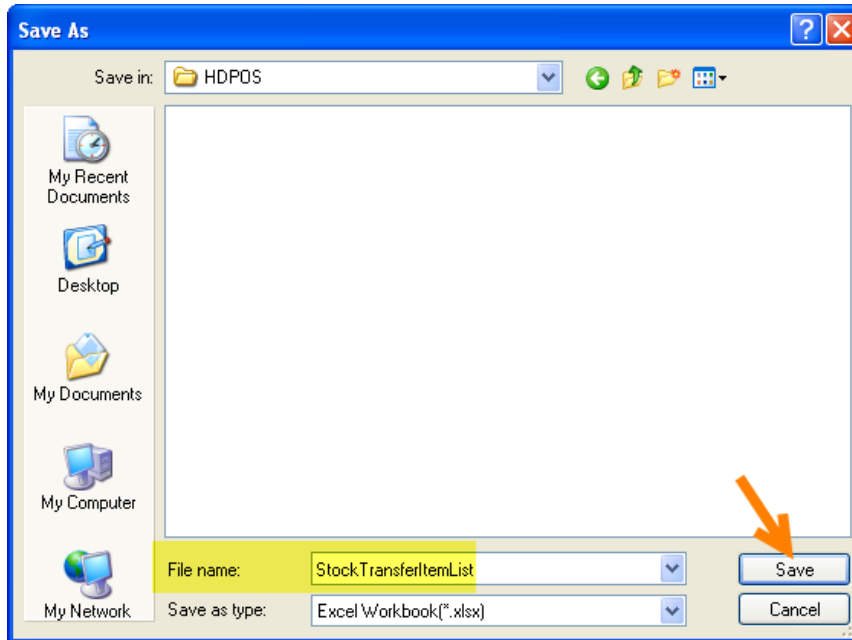
Godown to Godown Stock Transfer

Show Only Stock Transfer Show Only Dump Stock Correction

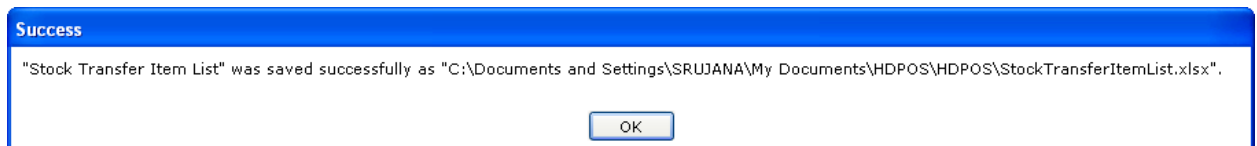
Show Only Stock Correction Show Only Stock Transfer Request

Number	From Godown	To Godown	Received By	Comment	Stock Transfer Type	Date	Status
HD-ST00002	HD	HDIT Franchise Store	Uma M		STOCK TRANSFER	04/06/2015 04:37 PM	Saved
HD-ST00001	Warehouse	HD	Hari K		STOCK TRANSFER	04/06/2015 03:38 PM	Saved

7. This will ask you to save an excel file in which item and quantity details will be there. Enter name for the excel file and click on Save.



8. A success message will be shown as below. Click on **OK**.



9. The excel file will be opened with details of **BARCODE** of items and **QUANTITY** of stock that you are transferring. You can send this excel file to your franchise store along with items.

