

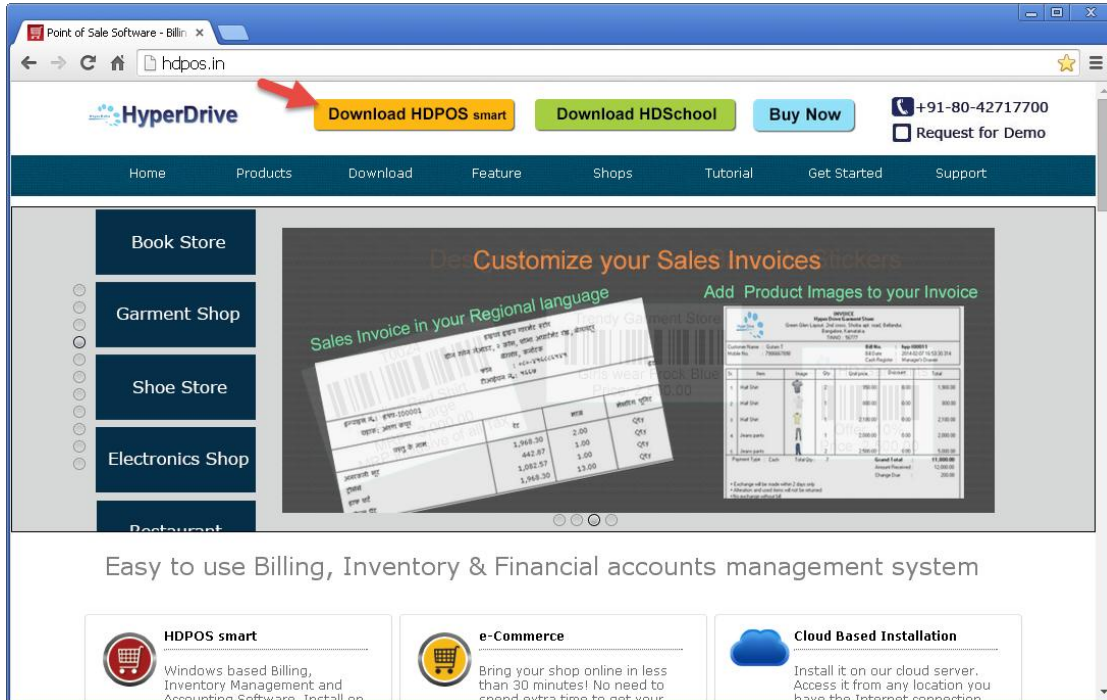
How to install Microsoft SQL Server 2008 R2 SP2 Expression Edition?



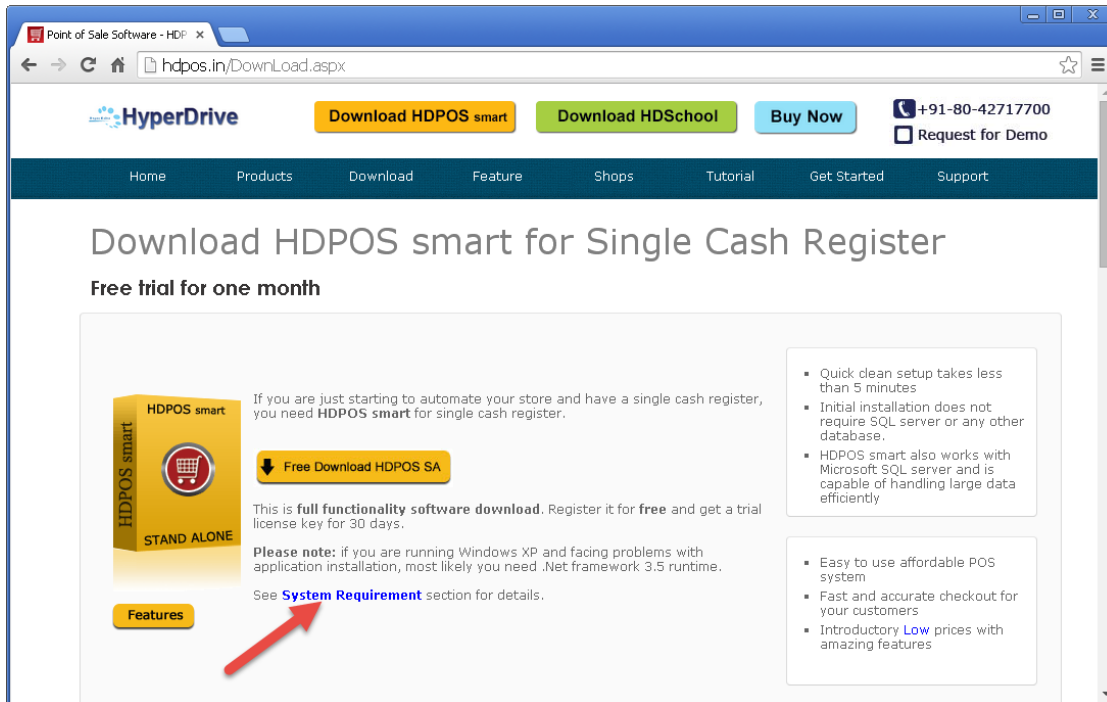
HDPOS smart Tutorials

Follow the steps below to install Microsoft SQL server 2008 R2 SP2 Express Edition.

1. Open any web browser and type www.hdpos.in to open our website. On the home page of our website click on **Download HDPOS smart**.




2. From the **Downloads** web page that got opened, click on **System Requirement** link.

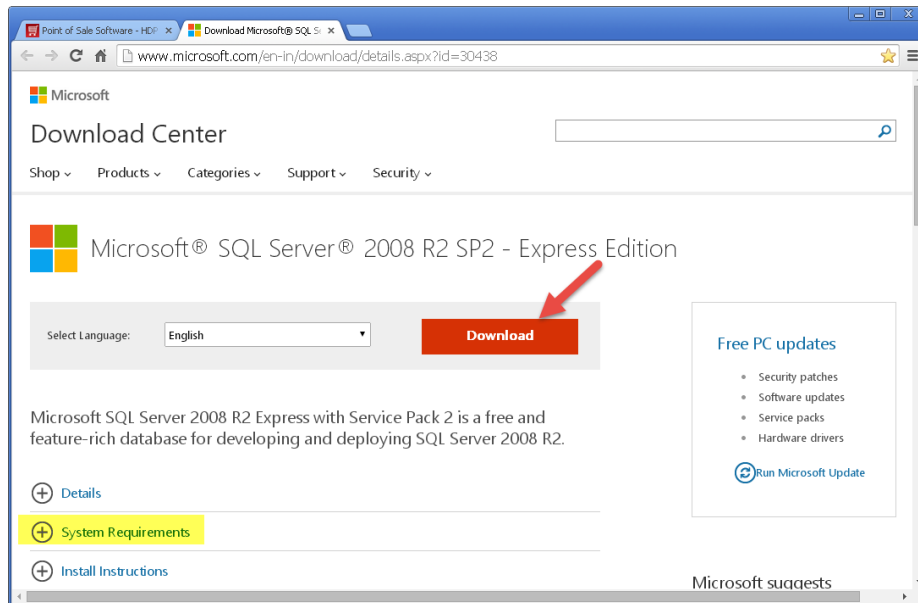




- From the **System Requirements** web page that got opened, you will a link to download SQL Server click on **Microsoft SQL Server 2008 R2 SP2 Expression Edition**.

	<ul style="list-style-type: none">To run our applications after trial key, we highly recoment that you use SQL server for better performance.You can download FREE version of SQL server directly from Microsoft's site:<ul style="list-style-type: none">Microsoft SQL Server 2008 R2 SP2 Expression Edition ←
-----------------------------------------------------------------------------------	--------------------------------------------------------------------------------------------------------------------------------------------------------------------------------------------------------------------------------------------------------------------------------------------------------------------------------------------------------------------

- You will be redirected to the SQL Server page as shown below. Click on **Download** button.



- You can click on **System Requirements** link to check the details which you can see as shown below.

⊖ System Requirements

Supported Operating System

Windows 7, Windows Server 2003, Windows Server 2008, Windows Server 2008 R2, Windows Vista, Windows XP

• System Memory:

- Minimum 512 MB for SQL Server Express with Tools, and SQL Server Express with Advanced Services and 4 GB for Reporting Services that installs with SQL Server Express with Advanced Services

• Hard Disk:

- 2.2 GB of Disk Space

• Processors:

X86:

- Pentium III-compatible processor or faster (Processor Speed - 1.0 GHz or faster)

X64:

- Minimum: AMD Opteron, AMD Athlon 64, Intel Xeon with Intel EM64T support, Intel Pentium IV with EM64T support (Processor Speed - 1.0 GHz or faster)

IA64:

- Itanium processor or faster (Processor Speed - 1.0 GHz or faster)

Limitations : SQL Server Express supports 1 physical processor, 1 GB memory, and 10 GB storage



5. You will see the following screen. Choose the SQL exe file depending on your computer's operating system. Click on **Next** button.
 - a. If your computer's operating system is 32bit version, select SQLEXP32_x86_ENU.exe.
 - b. If your computer's operating system is 64bit version, select SQLEXP64_x86_ENU.exe

Choose the download that you want ✕

<input type="checkbox"/> File Name	Size
<input type="checkbox"/> SQLEXP_x86_ENU.exe	110.4 MB
<input type="checkbox"/> SQLEXP_x64_ENU.exe	122.4 MB
<input type="checkbox"/> SQLEXP32_x86_ENU.exe	97.4 MB
<input type="checkbox"/> SQLEXPADV_x64_ENU.exe	1,008.6 MB
<input type="checkbox"/> SQLEXPADV_x86_ENU.exe	894.1 MB
<input type="checkbox"/> SQLEXPRT_x64_ENU.exe	340.5 MB


Download Summary:

You have not selected any file(s) to download.

Total Size: 0

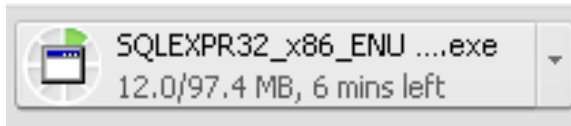
Next

Note: In the screenshot, SQLEXP_x64_ENU.exe and SQLEXP32_x86_ENU.exe are circled in green. Red callouts point to them: 'For 64-bit' for the x64 file and 'For 32-bit' for the x86 file. A red arrow points to the 'Next' button.

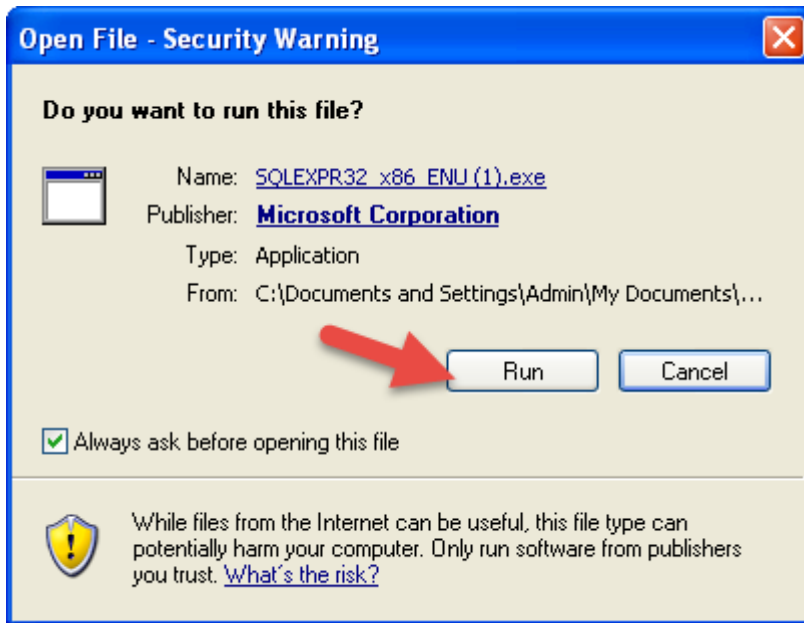
- To find out if your computer's operating system is a 32-bit or 64-bit version of Windows, do the following:
 - i. For Windows 7 or Windows Vista:
 - Click the **Start** button , right-click on **Computer**, and click on **Properties**.
 - Under **System**, you can view the system type.
 - ii. For Windows XP:
 - Click **Start**. Right-click on **My Computer** and click **Properties**.
 - Under **System**, you can view the system type. Under System section: if you don't see "x64 Edition" listed it means the Operating System is 32-bit version of Windows XP. If "x64 Edition" is listed under **System**, it means the Operating System is 64-bit version of Windows XP.



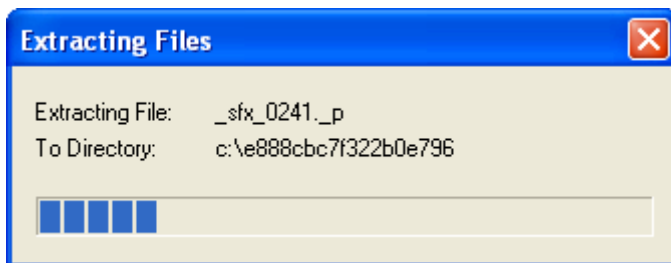
6. Your Download will get started. For Example, here you can see the download of SQLEXPRESS 32bit.



After the download gets completed, run that file by clicking on it. You will see a warning message as shown below. Click on **Run** button.

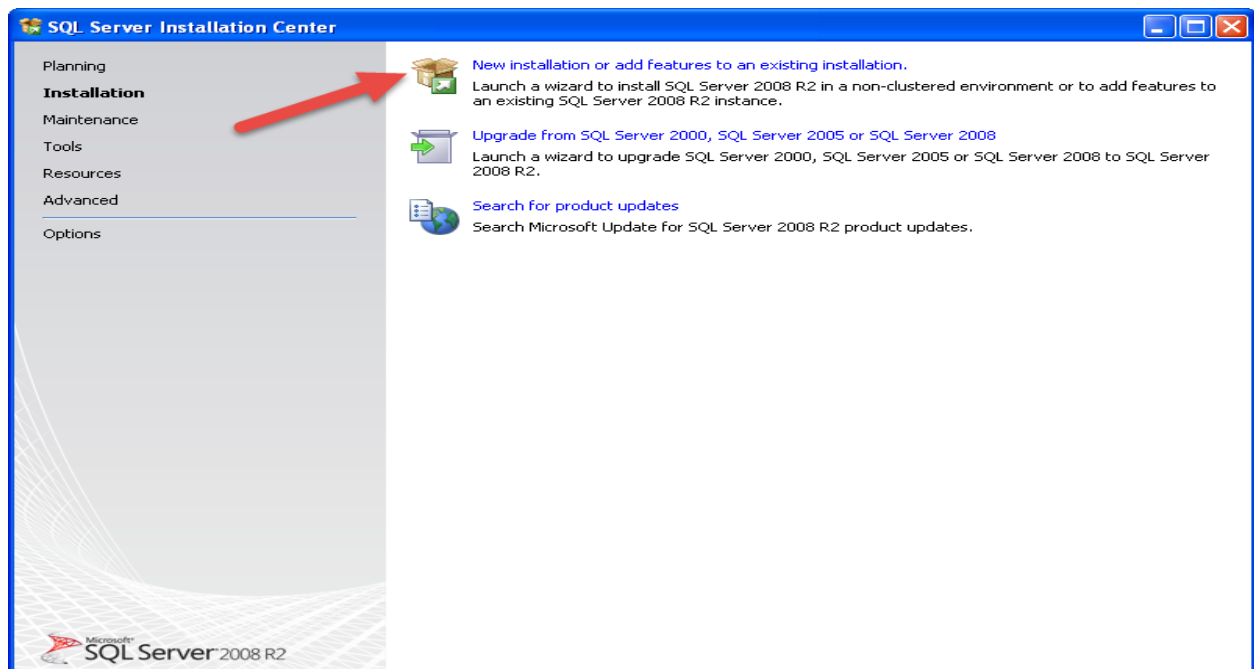


You will see the following and the Installation page will get opened.

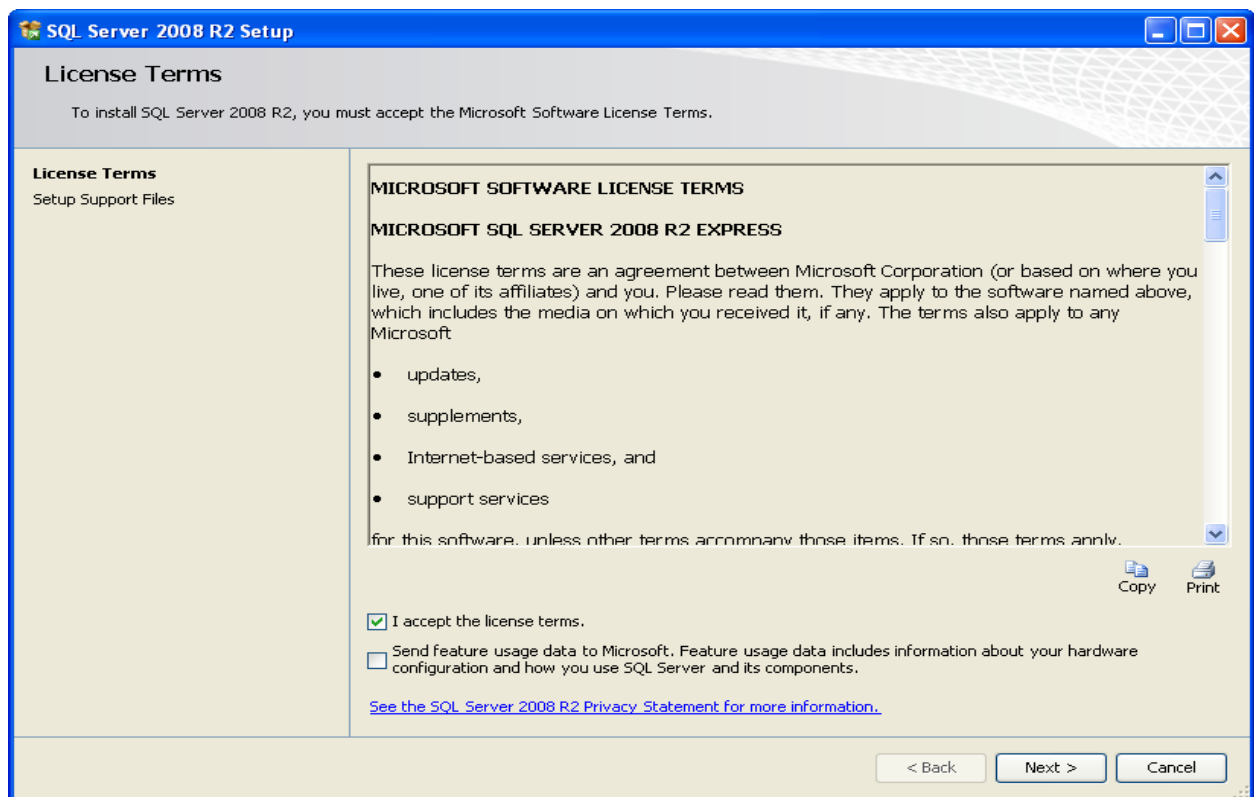




7. You will see the following screen. Click on **New Installation** or add features to an existing installation.

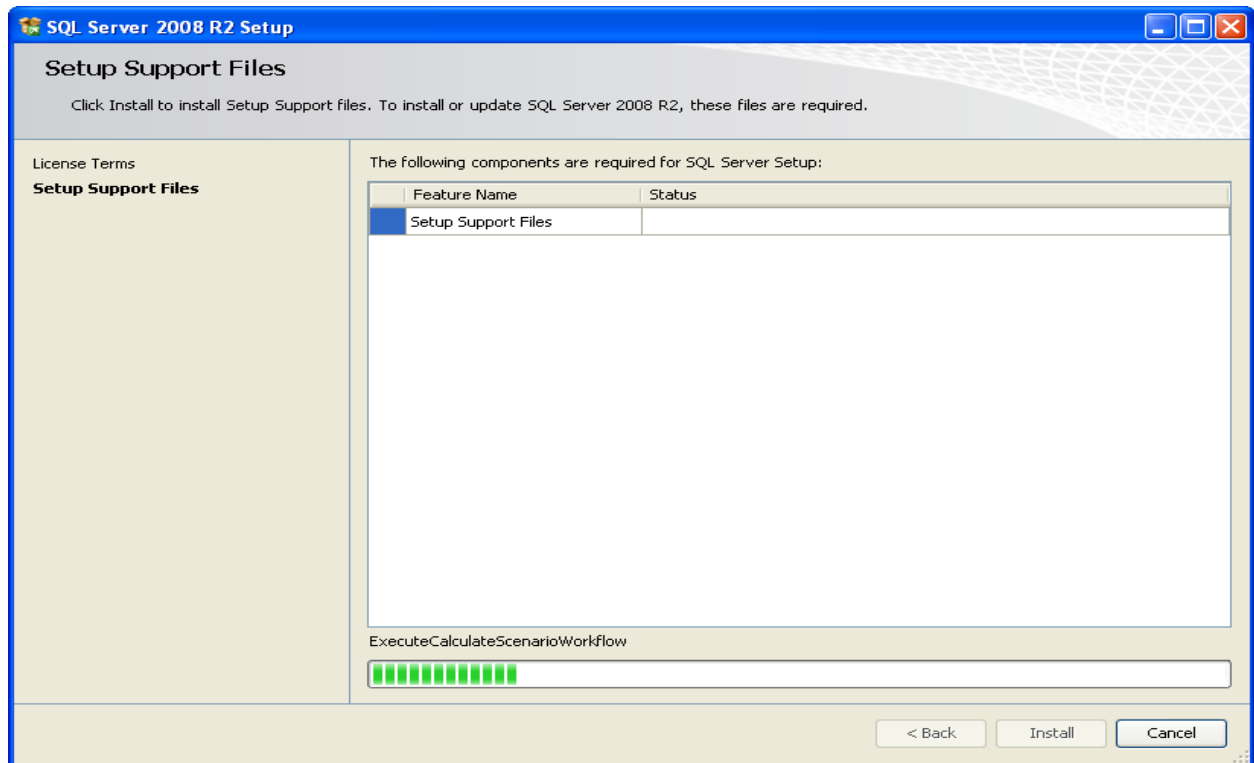


8. You will see the following screen. Click to accept license terms and click on **Next**.

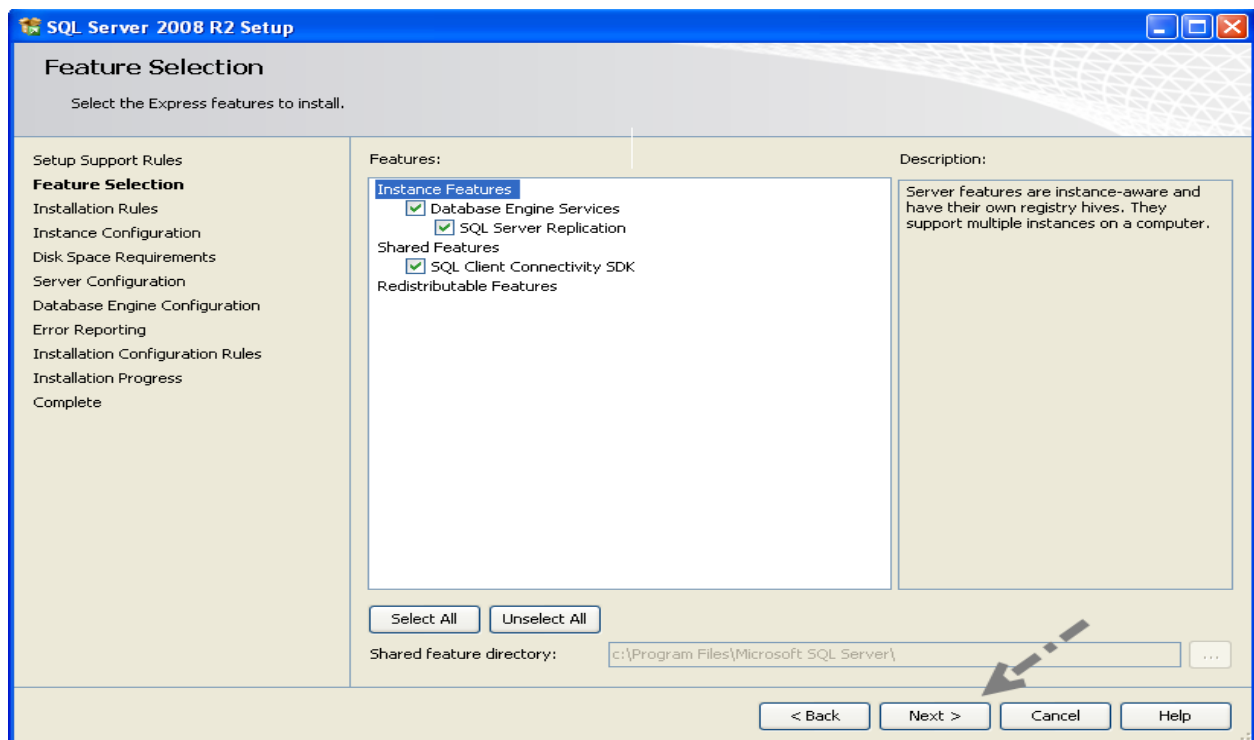




9. You will see the following screen and click on **Install**.

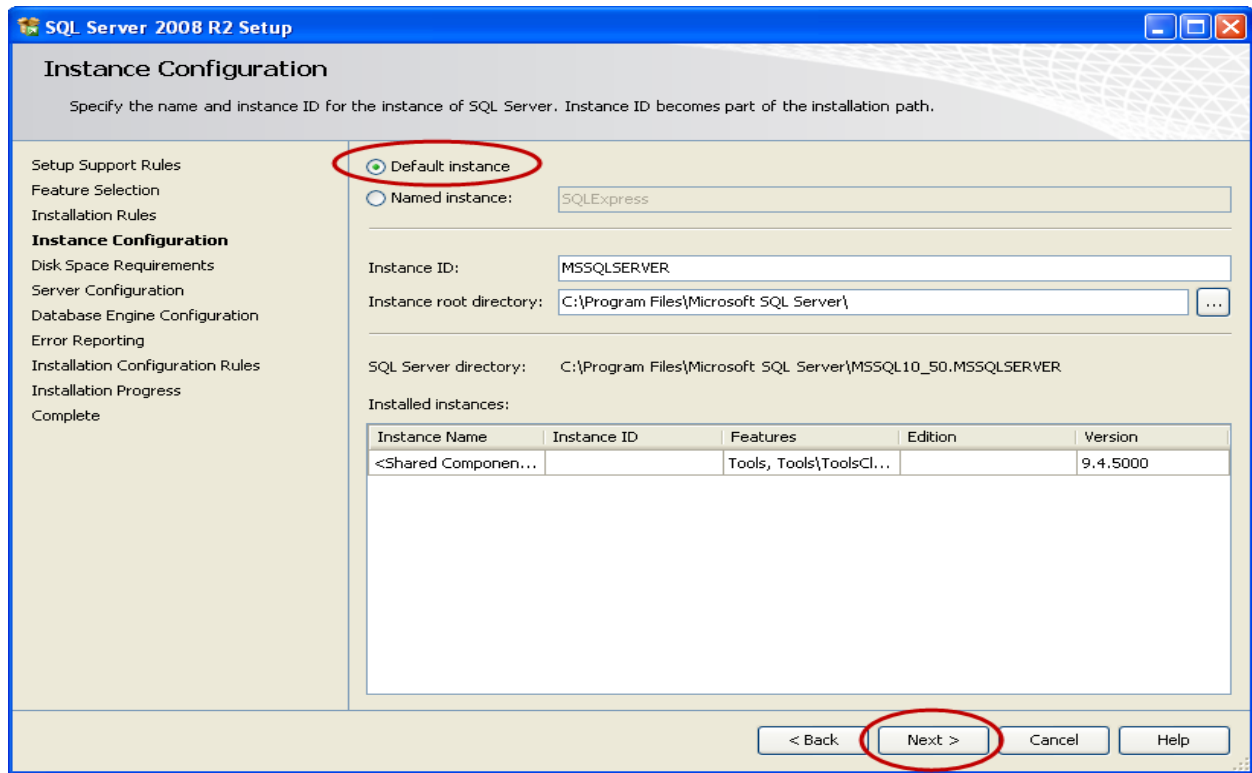


10. You will see the following screen. Click on **Next**.

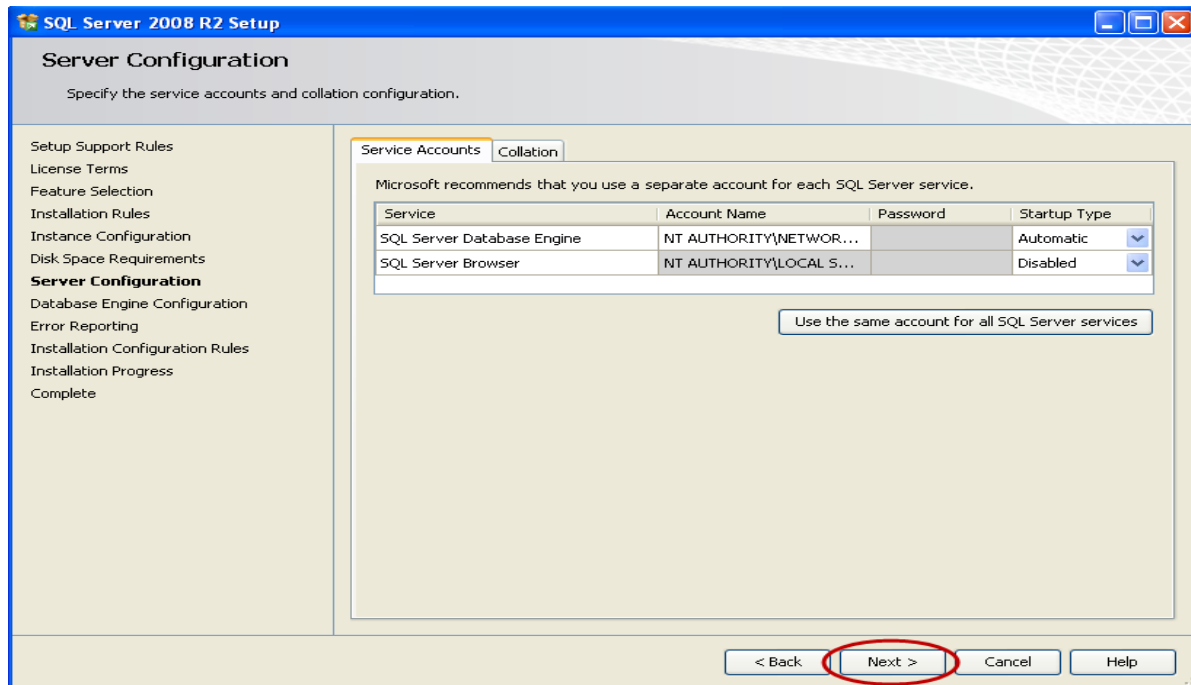




11. In the following screen shown as below, select default instance. Instance id will be generated. Please note the id and instance root directory path. Click on **Next**.

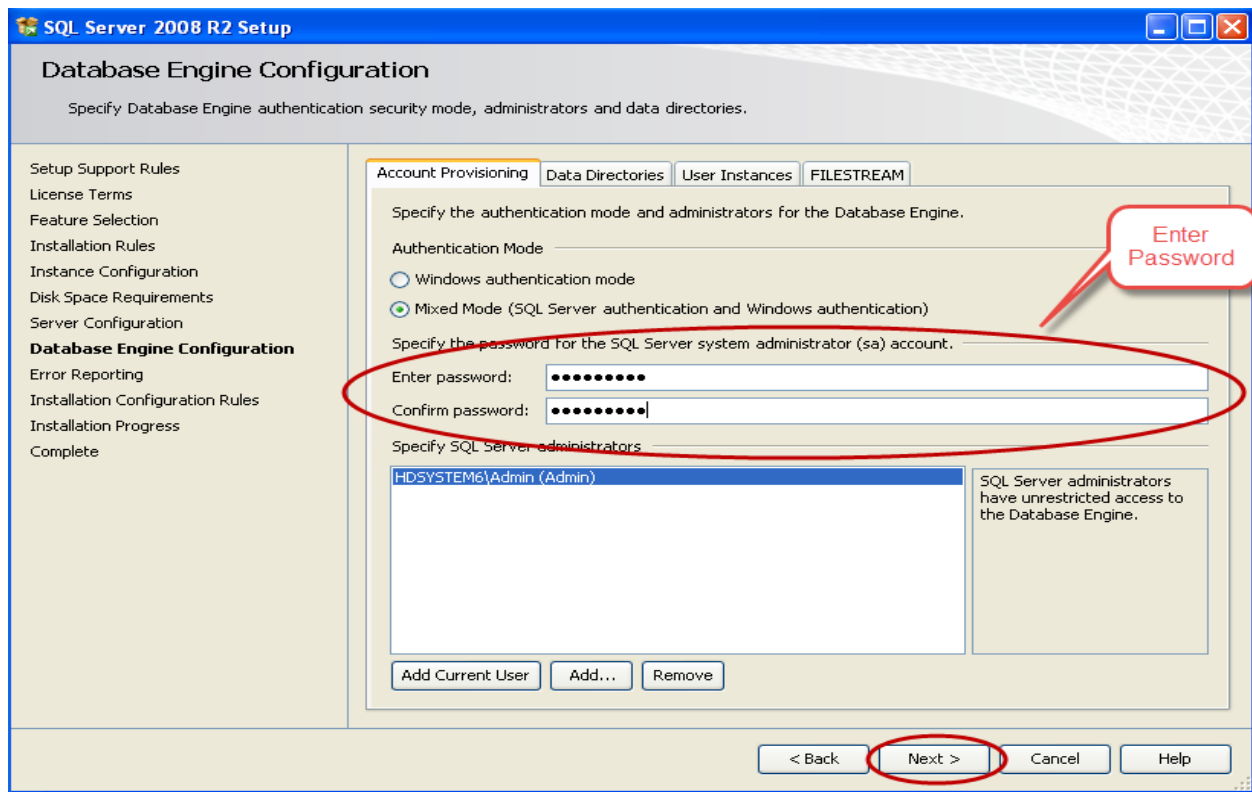


12. In the following screen, select account name as NT AUTHORITY\NETWORK and click on **Next**.

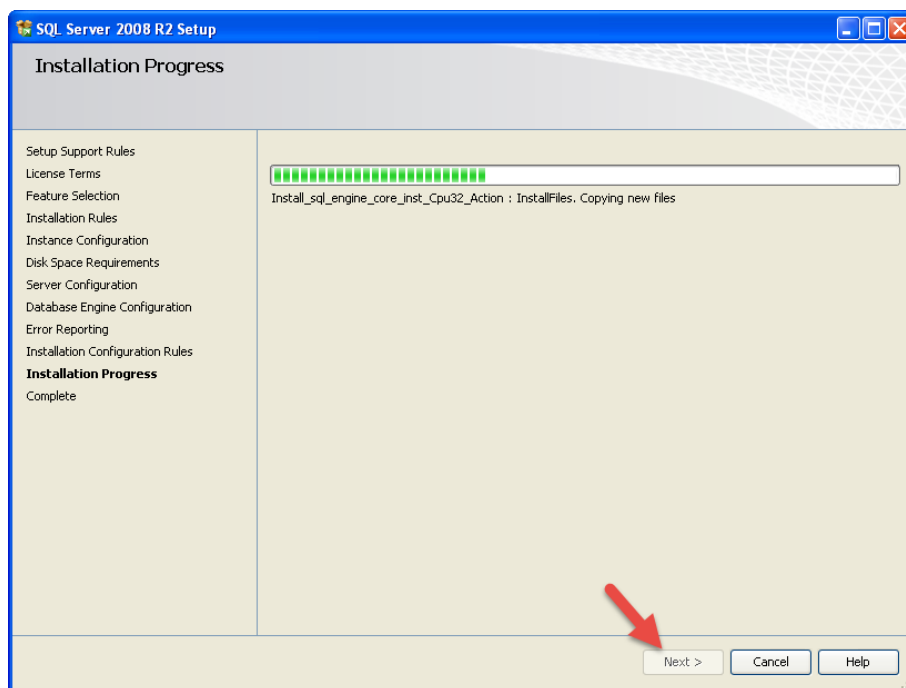




13. In the following screen shown as below, select **Mixed Mode** from **Authentication Mode** section. Enter the password and confirm password, click on **Next**.



14. You will see the following screen. When installation gets completed, click on **Next**.





15. SQL Server is successfully installed. Click on Close.

