

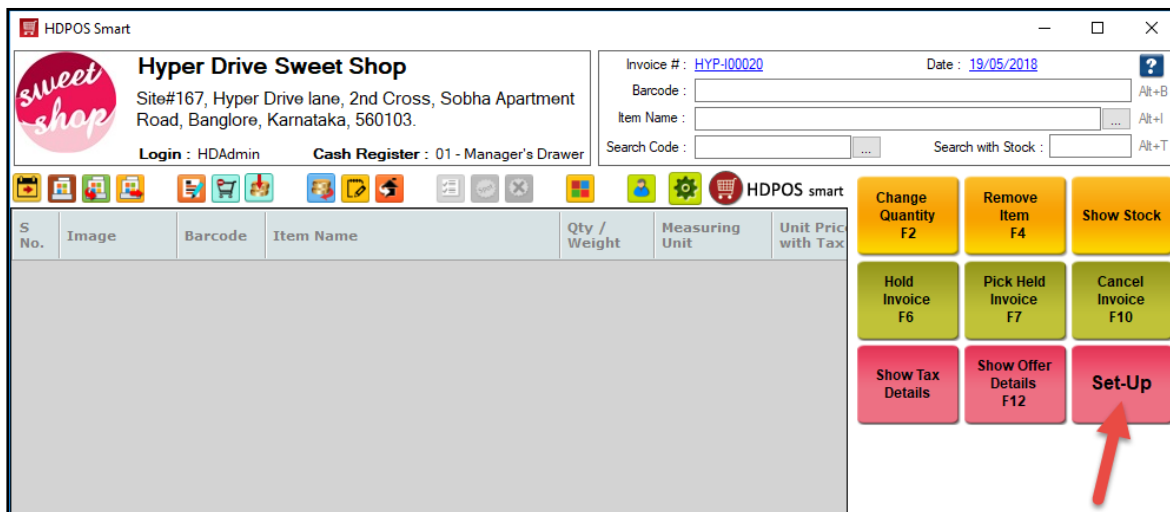


How to do Loading Document settings in HDPOS smart?

In order to use Loading Document in HDPOS smart, you will have to enable certain settings from Settings module. Follow the steps below:

Step-1: Enable Loading Document setting.

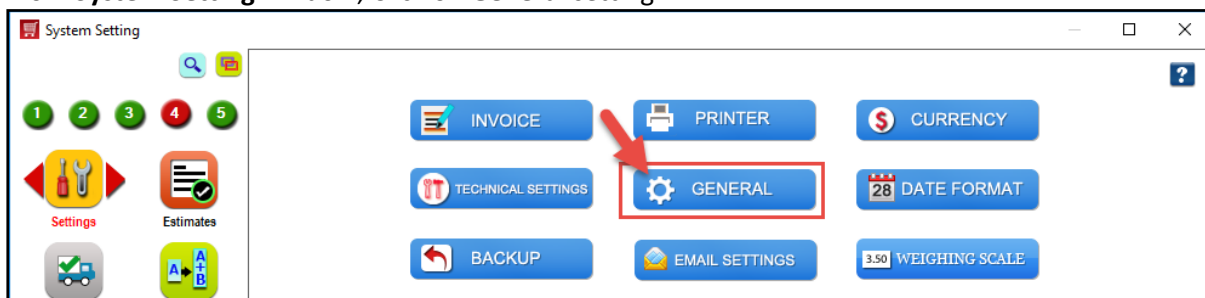
1. Run **HDPOS Smart** and click on **Set-Up** button.



2. From the 4th page of **Set-Up**, click on **Settings**.

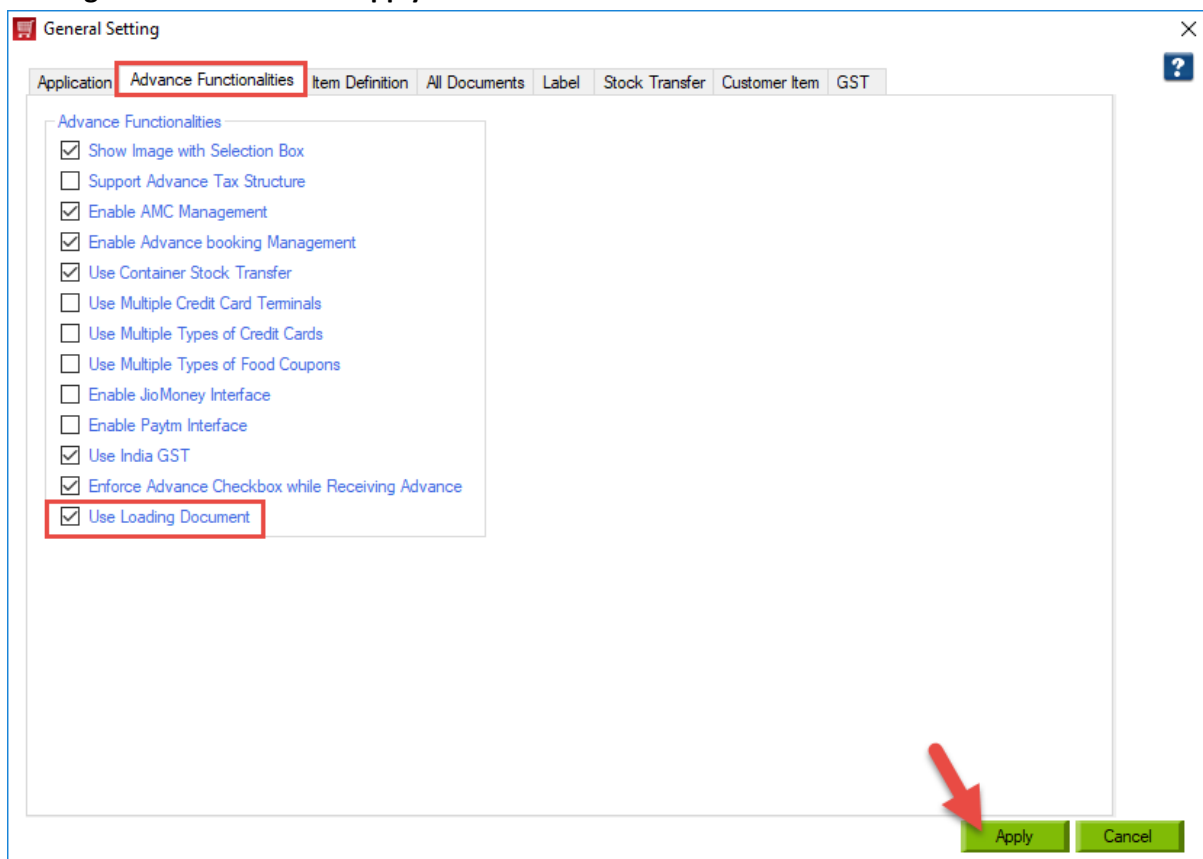


3. From **System Setting** window, Click on **General** setting.

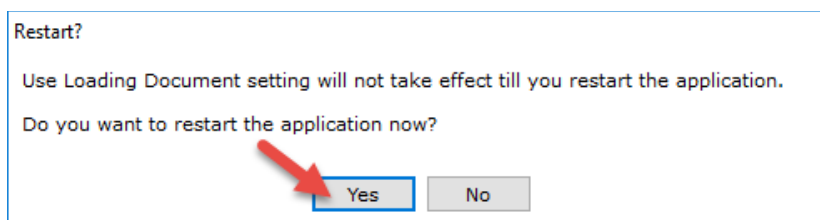




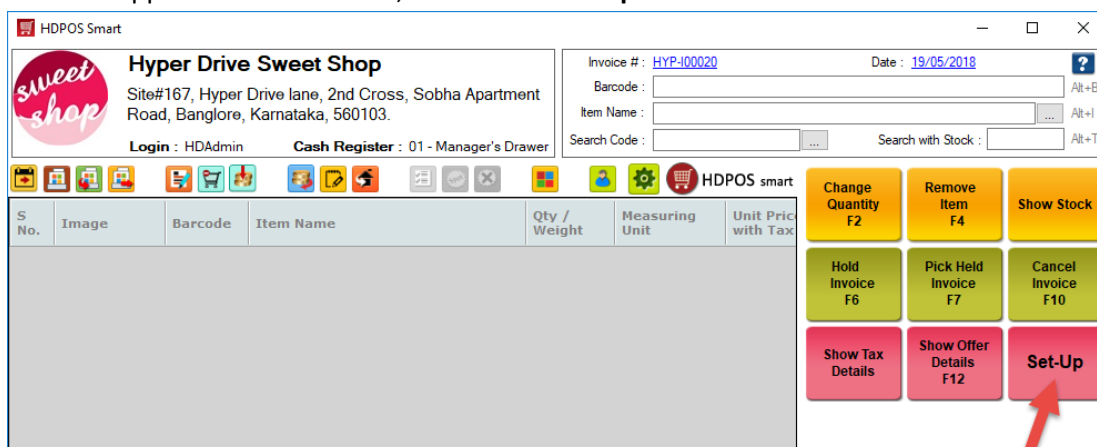
- From **General Setting** window, click on **Advance Functionalities** and check the checkbox '**Use Loading Document**'. Click on **Apply**.



- Restart** window will pop-up, asking to restart the application to make the changes effective, click on **Yes**.

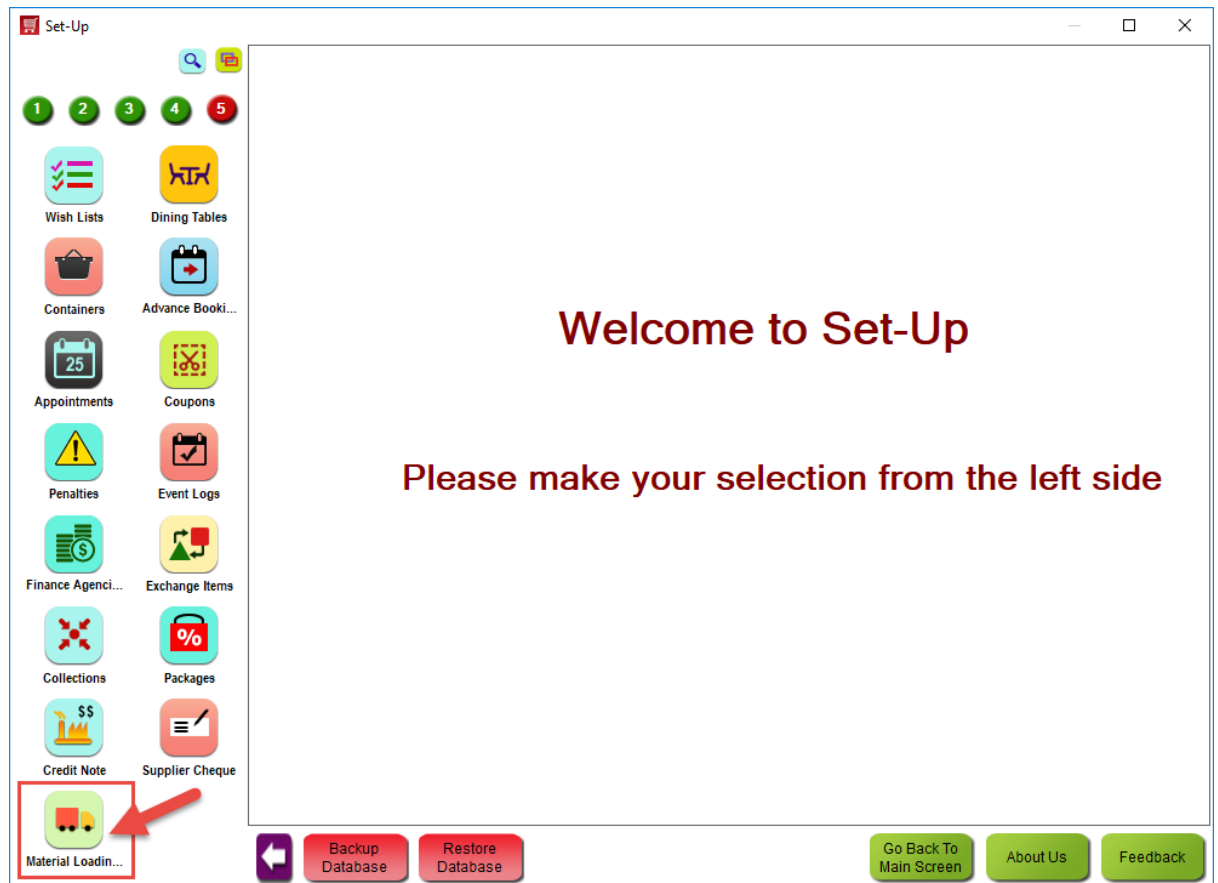


- After the application is Restarted, click on the **Set-Up** button.





7. From the 5th page of **Set-Up**, you can see the **Material Loading** functionality is added.

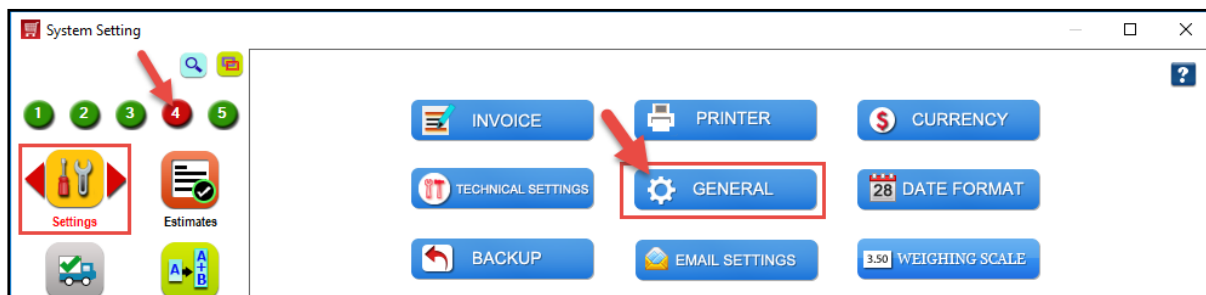




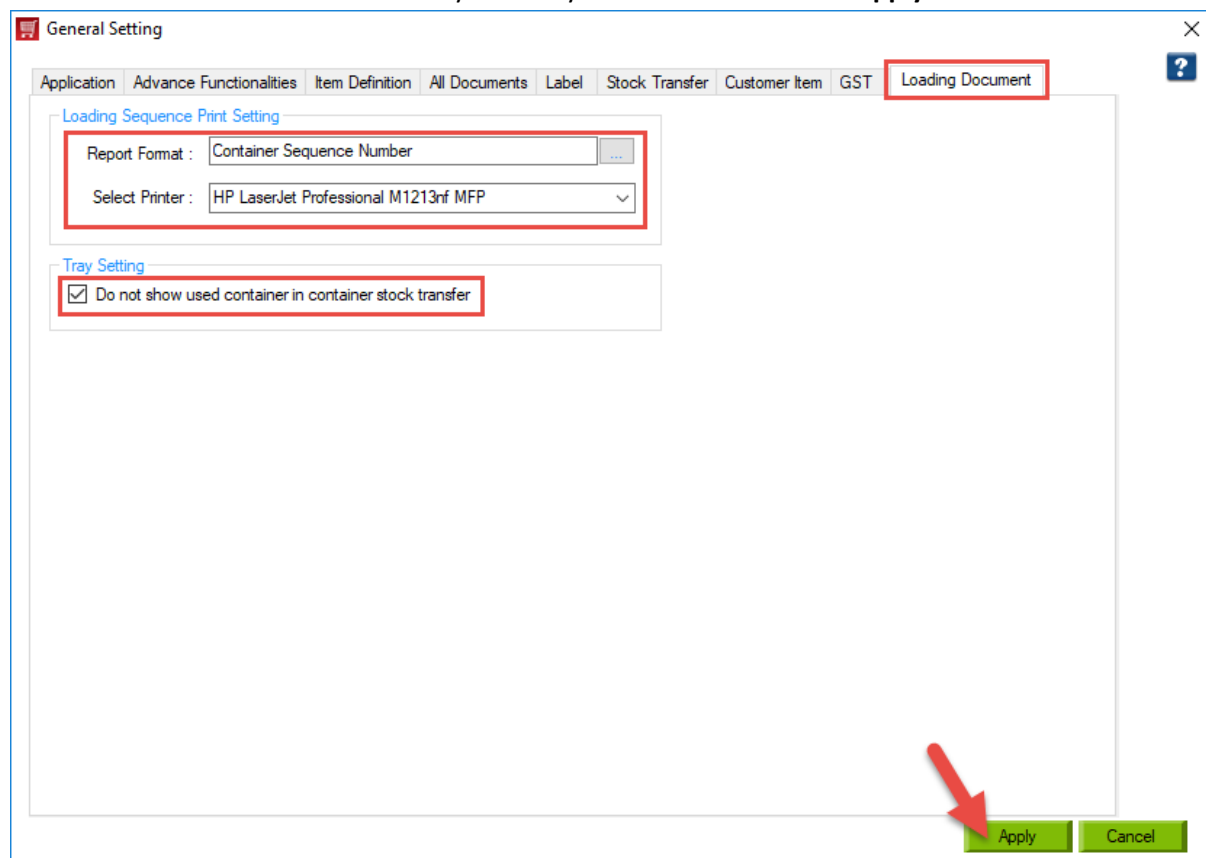
Step-2: How to do Loading Sequence Print Setting

You can print a barcode for the Container used while Container Stock Transfer which will make it easy for you to scan the barcode while creating Loading Document. In order to set the barcode sticker report for printing container sequence number, follow the below steps:

- From the 4th page of **Set-Up**, click on **Settings**, click on **General** from **System Setting** window.



- From **General Setting** window, click on **Loading Document** and select the **Report format** for the Container sequence and **Select Printer** for printing container sequence number under **Loading Sequence Print Setting** section.
- There is another setting under **Tray Setting**, check the checkbox **Do not show used container in container stock transfer**, by enabling this setting while creating container stock transfer it will not show the containers which are already in use by another item. Click on **Apply**.



Note: The above settings are machine (Client) dependent i.e. If you are using Client-Server version of HDPOS smart, then if this setting is enabled on a client then this will work only on that client.

