


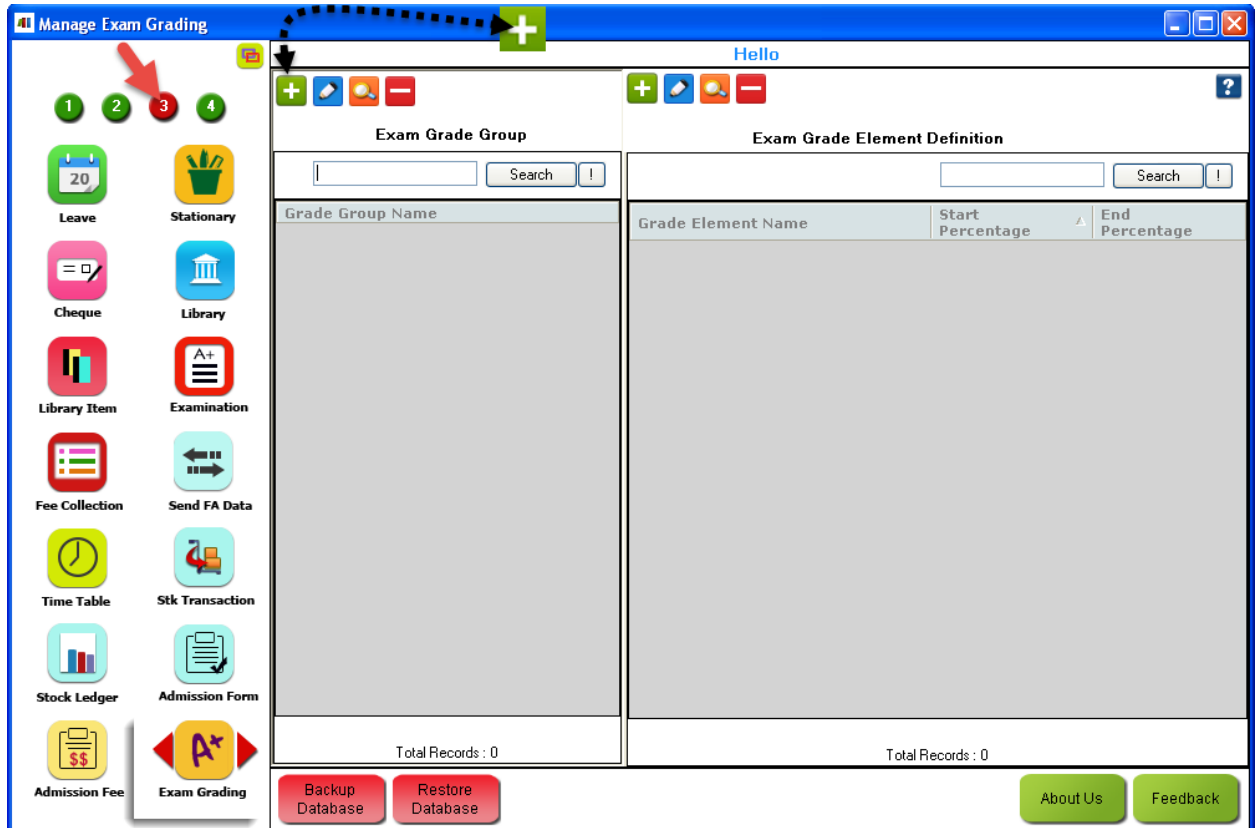
# How Define Exam Grading?



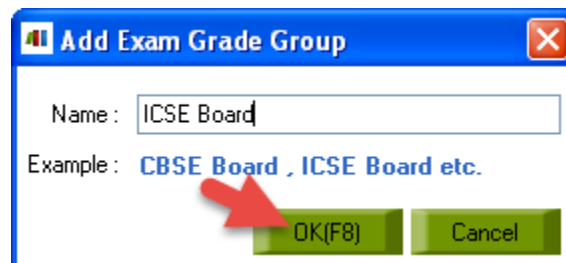
HDSchool Tutorials

To define an Exam Grade Group and Exam Grade Element definition, follow the steps below.

1. Run HDSchool.
2. From 3<sup>rd</sup> page of HDSchool, click on **Exam Grading**.
3. From **Manage Exam Grading** screen, click on  **Add Grade Group**.

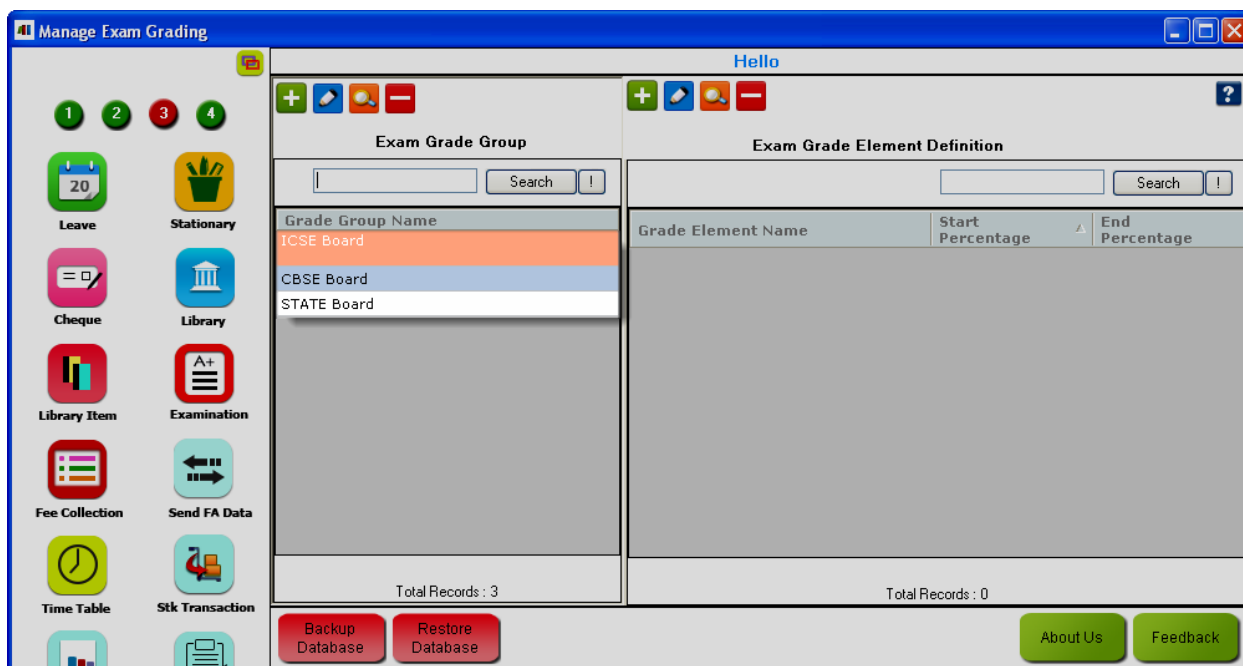



4. You will see the **Add Exam Grade Group** screen where you can enter any name for exam grade group. Click on OK.

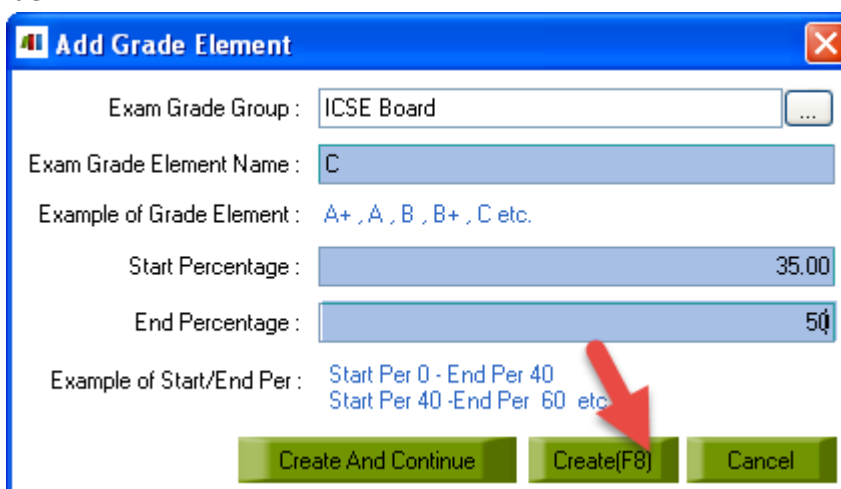




- You can see all the defined Exam Grade Groups from Exam Grade Group section of this screen as shown below.



- Select any exam grade group and from the Exam Grade Definitions section, click on  **Add Grade Element** button.
- You will see **Add Grade Element** screen as shown below. Enter exam grade element name, **start and end percentage**. Click on **Create**. If you want to create more Grad elements, click on **Create and Continue**.





8. You can see all the defined Exam Grade Groups and associated Grade Element Definitions of this screen as shown below.

**Exam Grade Group**

Grade Group Name
ICSE Board
CBSE Board
STATE Board

Total Records : 3

**Exam Grade Element Definition**

Grade Element Name	Start Percentage	End Percentage
C	35	50
B	50	65
B+	65	75
A	75	85
A+	85	100

Total Records : 5

Backup Database    Restore Database    About Us    Feedback