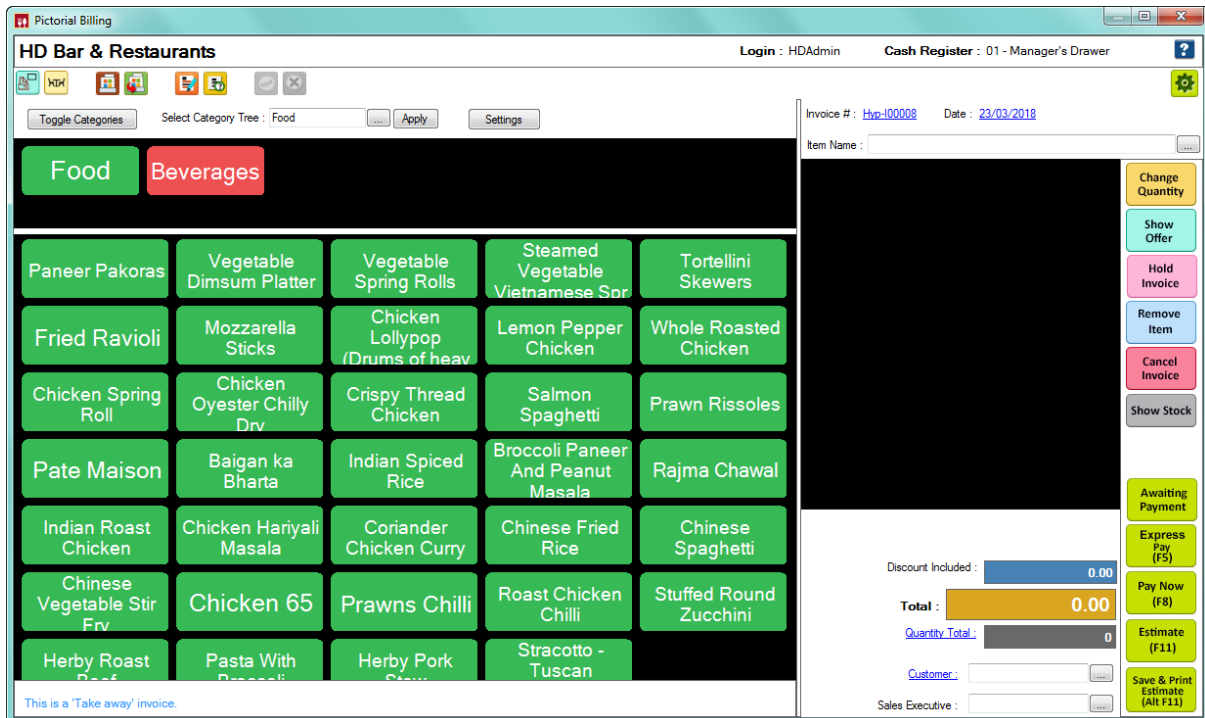


# How to customize Item Navigator UI for billing Screen Type Button in HDRestaurant?



HDRestaurant Tutorials

If you're configured default billing screen type as button, you'll see a billing screen as shown below

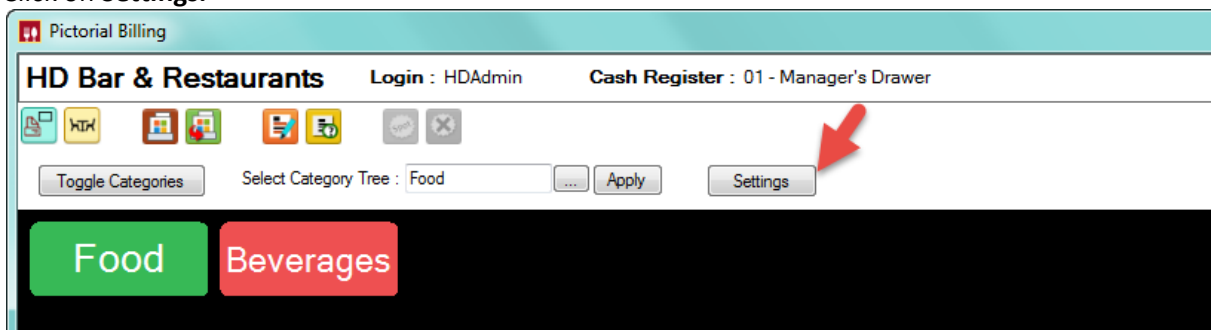


By default all your categories and items are displayed with installation default colors and sizes, however you can customize this settings as per your system resolution.

Here in the above screen, Category **Food** has background display color Green as default and all the items under Food category also have background color as Green.

Follow the steps explained below to customize item navigator UI.

1. Run **HDRestaurant**.
2. Click on **Dine –In, Take Away or Delivery** .Here I have order type as Take Away.
3. Click on **Settings**.

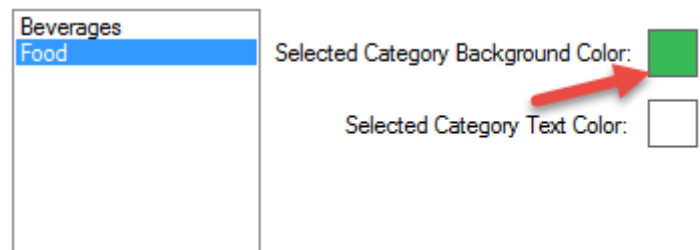




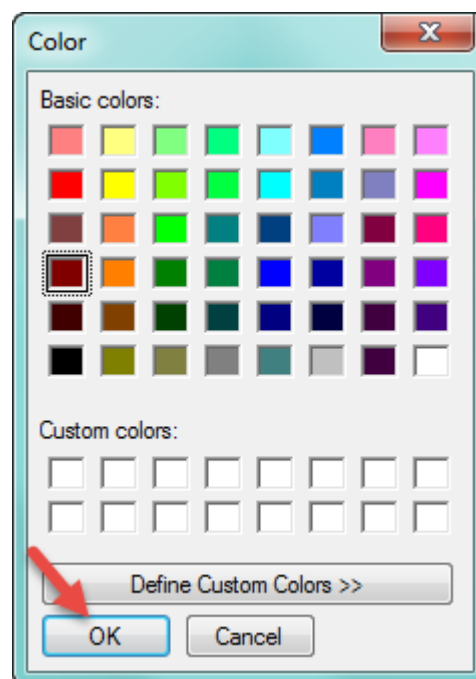
4. Select a Category for which you intend to make changes from **Category Button Settings** section. In the below example I have category Food for customizing display settings.

5. To change **Category Background display** color:

- Select the category and click on color box next to **Selected Category Background Color** field.



- Choose a color from color palette to apply as background color for selected category.



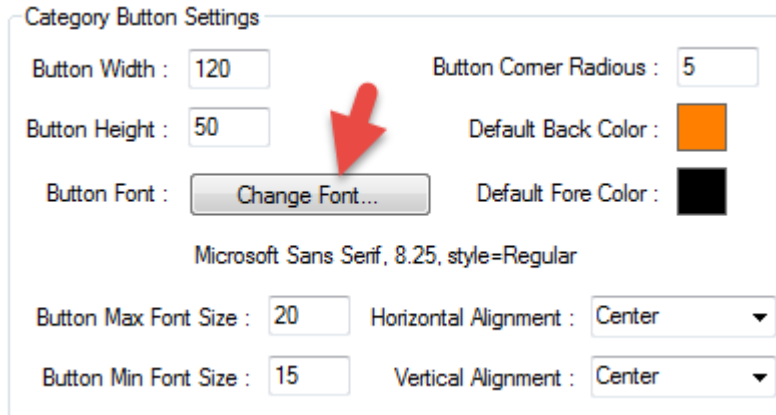
- Click on **OK** to apply the changes.

6. Change the **Text Color** Similarly.

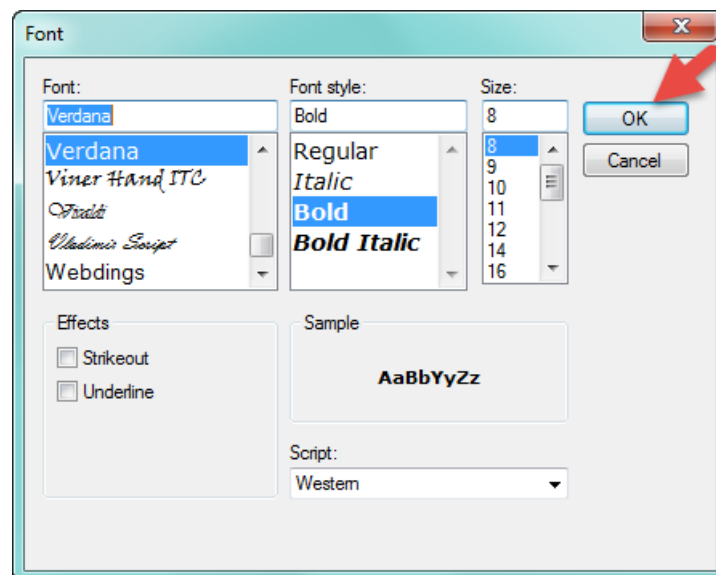


7. To change the font style:

- Click on Change Font.



- Choose the font style and click on **OK** to apply the changes.



8. **Horizontal Alignment:** Select the text alignment, you can choose align Left, Right or Center.

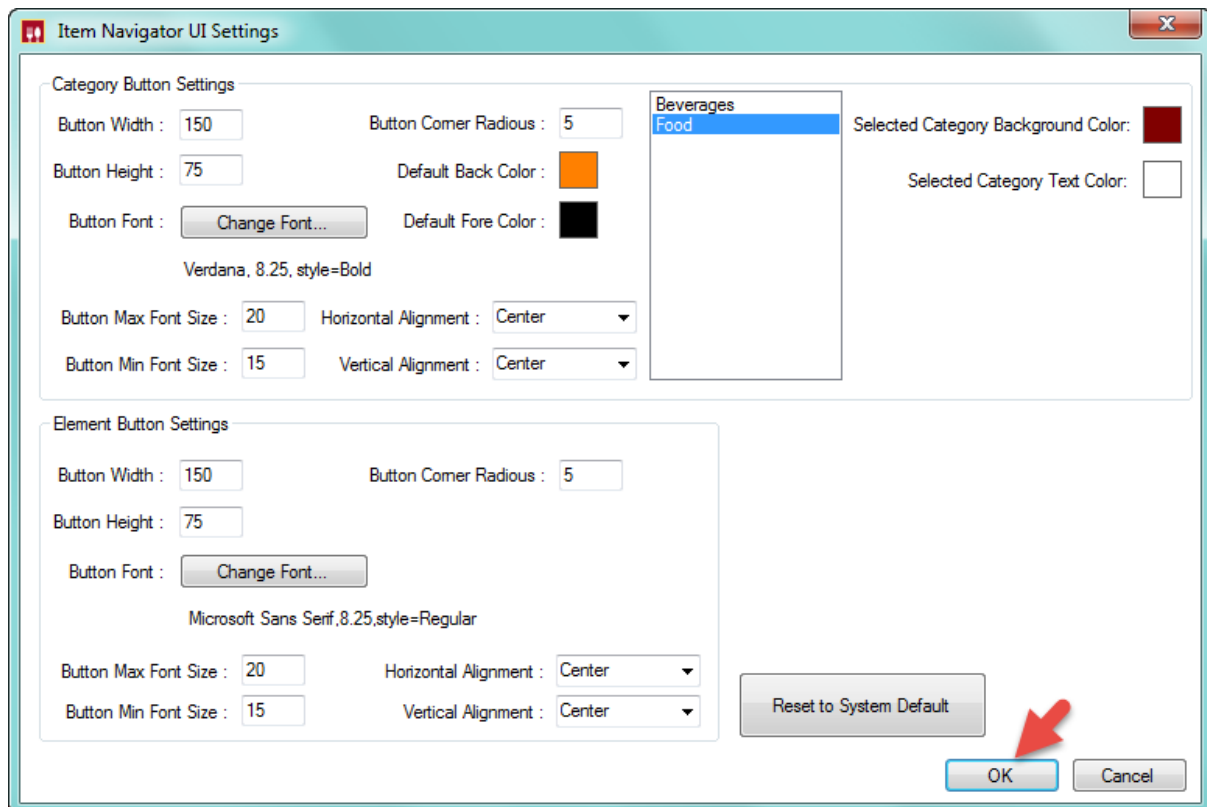
9. **Vertical Alignment:** Select the text alignment, you can choose align Top, Bottom or Center.

- **For Example:** If you have chosen, Horizontal Alignment as **Left** and Vertical Alignment as Center. Text on the categories will be displayed as shown below:





10. **Button Height:** Enter the Category button height to be displayed on the screen, by default it is 120.
11. **Button Width:** Enter the Category button height to be displayed on the screen, by default it is 50.
12. Similarly update Item button settings as required and click on **Ok** to apply the changes.



13. You can view changes in billing screen. However you can revert back to installation default by clicking on **Reset to System Default**.