

How to configure idle time-out setting for IIS?



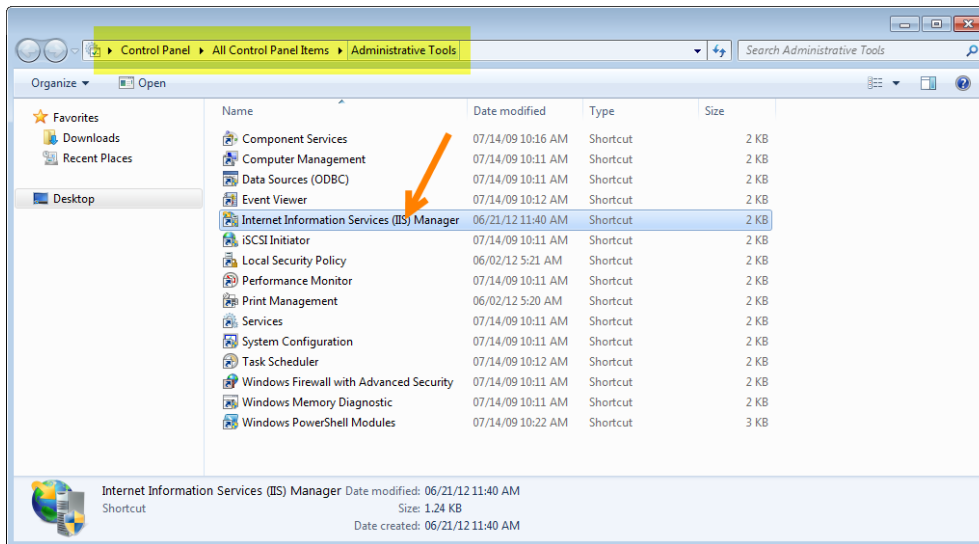
HDPOS smart Tutorials

To change the IIS idle time out, follow the steps below.

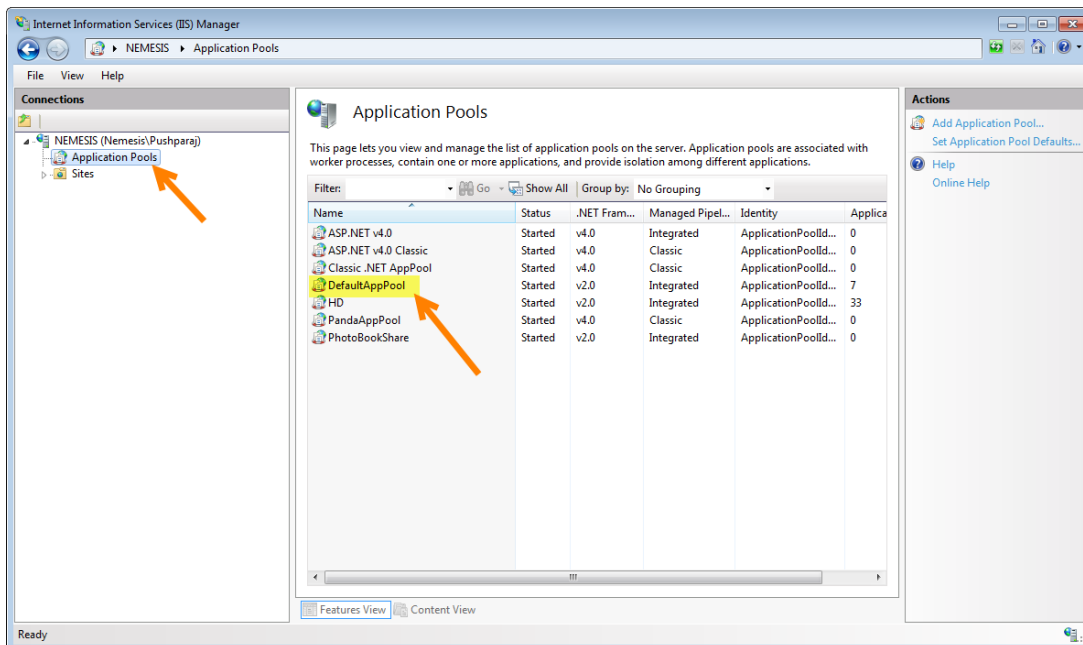
For IIS 6 and later versions:



1. Click on **Start** button
2. Go to **Control Panel**. Click on **Administrative Tools**.
3. Double click on **Internet Information Services (IIS) Manager**.



4. In the left panel of the screen, click on top node. You will see **all Application Pools**.
 - Select the **Application Pools**. It will display all the Application pools in the right panel.
 - Select **Default App Pool** from right panel. From the last panel, you will see **Advanced Settings**.
 - Select **Advanced Settings**.





5. You will see a dialog box of **Advanced Settings** as shown below.
- Select the field of **Idle Time-out (minutes)**. By default the value will be 20.
 - Change the value for Idle Time-out (minutes) to “800” or above.
 - Click on **OK** button.

Advanced Settings

(General)	
.NET Framework Version	v2.0
Managed Pipeline Mode	Integrated
Name	DefaultAppPool
Queue Length	1000
Start Automatically	True
CPU	
Limit	0
Limit Action	NoAction
Limit Interval (minutes)	5
Processor Affinity Enabled	False
Processor Affinity Mask	4294967295
Process Model	
Identity	ApplicationPoolIdentity
Idle Time-out (minutes)	800
Load User Profile	True
Maximum Worker Processes	1
Ping Enabled	False
Ping Maximum Response Time (seconds)	90

Idle Time-out (minutes)
[idleTimeout] Amount of time (in minutes) a worker process will remain idle before it shuts down. A worker process is idle if it is not processing requests and no new requests are received.

OK Cancel

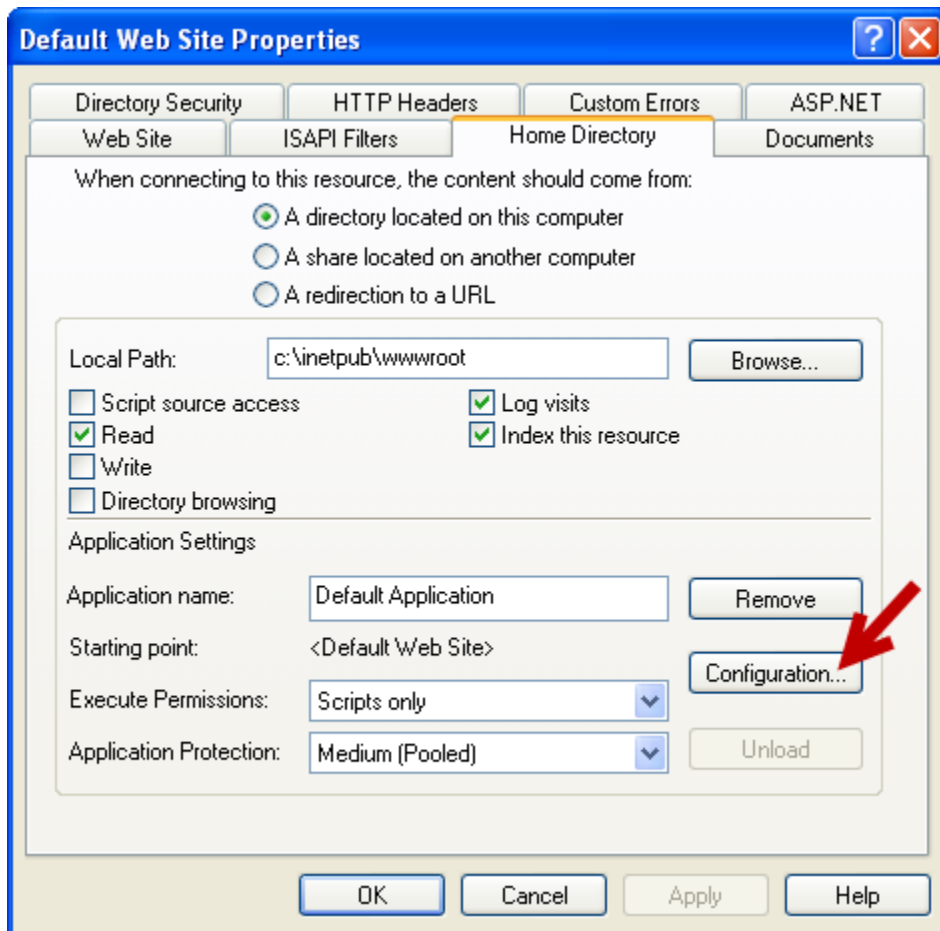


For IIS 5:

You can follow the same steps that are given above. But instead of selecting Advanced Settings, you have to select Properties.

You can find the properties window as shown below.

- From **Properties** window, click on **Home Directory** tab.
- Click on **Configuration** button.



- You will see **Application Configuration** window as shown below.
- Click on **Options** tab.
- Set the value of session timeout from 20 to 800 or more.

