

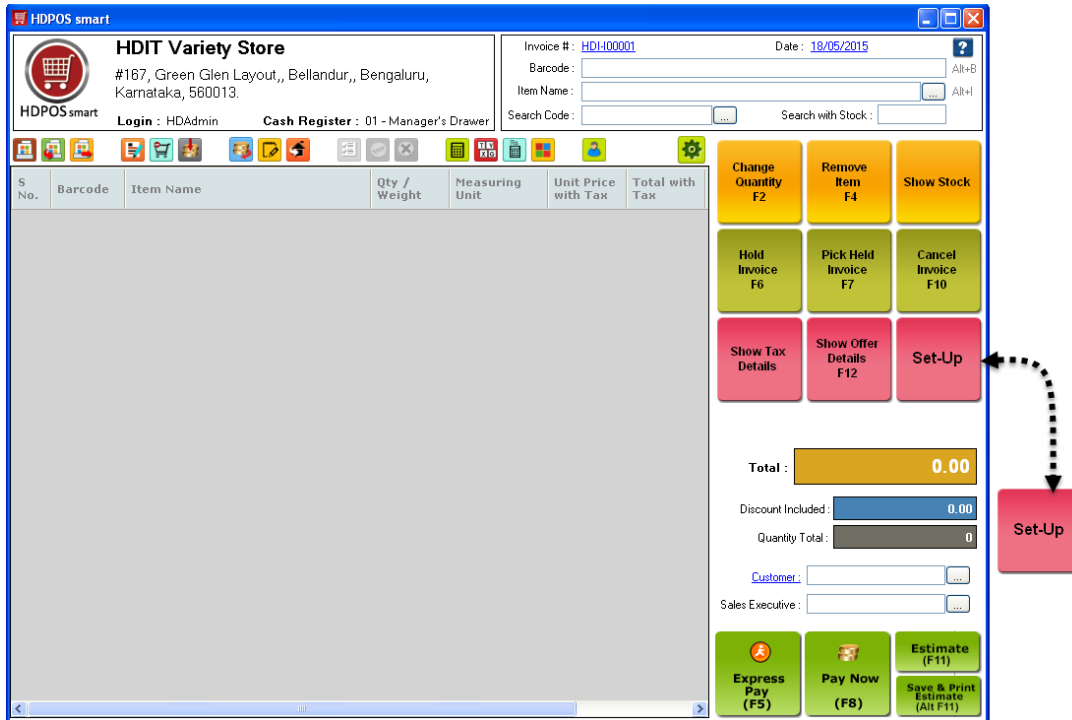
How to apply a category tree to Eshop?



HDPOS smart Tutorials

Category tree is useful in defining the sub menus for top category menu in Eshop. To apply a category tree to Eshop, follow the steps below.

1. Run **HDPOS smart**. Click on **Set-Up** button from main screen.

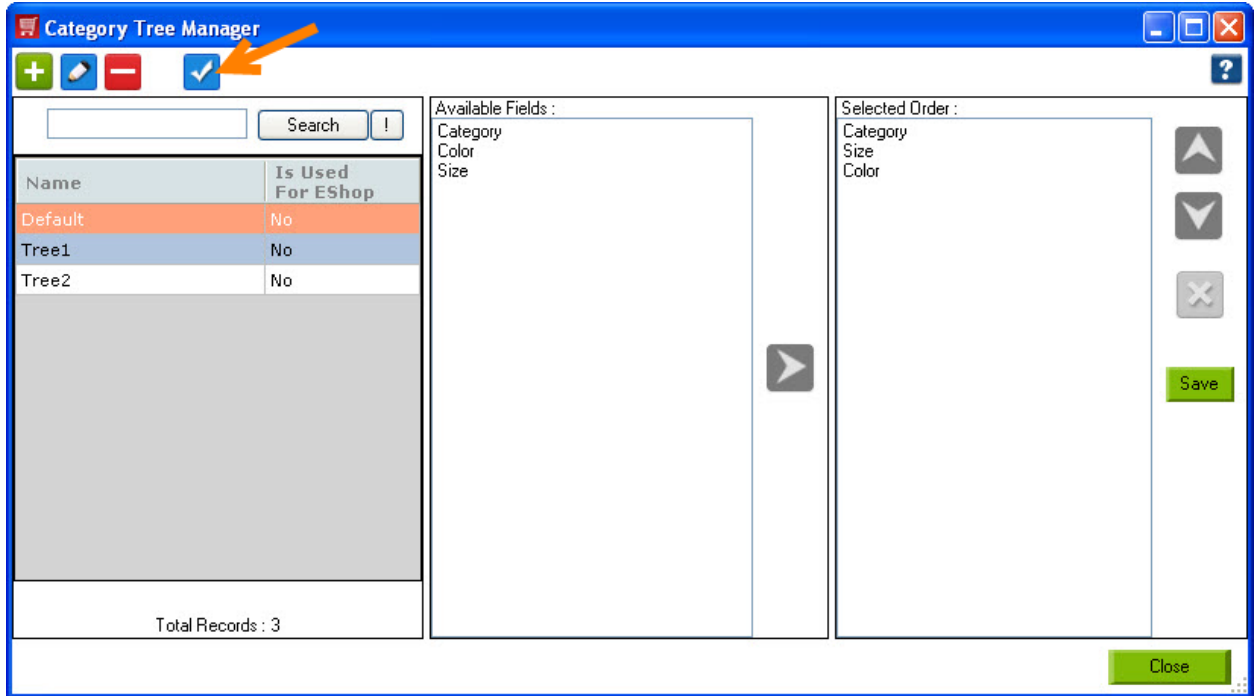


2. Click on 4th page. Go to **Settings**. Click on **Category Tree**.





3. You will see Category Tree Manager screen. In the left hand side of the screen, you will see all category trees that are defined.
4. Select a category tree which you want to apply to Eshop, and click on the **Mark as is used for Eshop** button.



5. Then it will be applied and status of **Is used for Eshop** will get changed to **Yes**. Click on Close.

