

How do I manage GST for In State and Out State purchases in HDPOS smart?

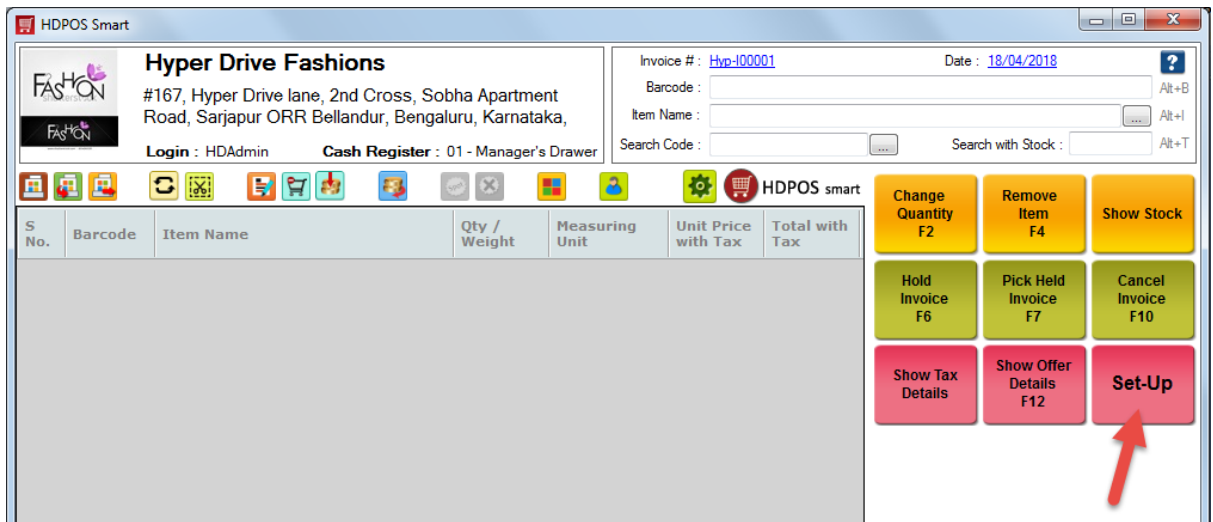


HDPOS smart Tutorials

In certain business you may require to change tax applicability based on Place of Taxation or Place of supply (In State or Out State supply). HDPOS smart provides flexibility to manage Inter-State and Intra-State taxes for your Purchases by changing the tax of the items or change the tax percent at the time of making purchase invoice based on the nature of supply.

To change the purchase tax based on the nature of supply (In state or Out State) follow the steps below:

1. Run **HDPOS smart**, click on **Set-Up** from main screen.



2. From 4th page of **Set-Up**, click on **Settings**.



3. From the **System Setting** screen, Click on **Invoice**.



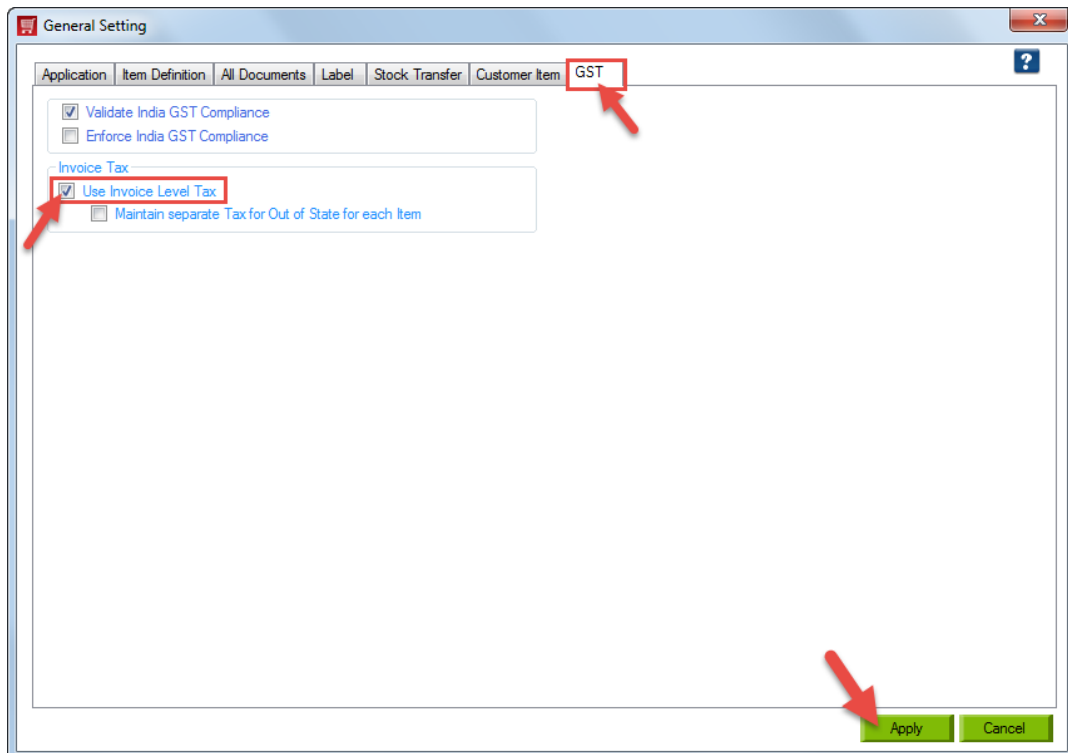
Note: GST tab will be available only when **Use India GST** setting is ON. Make sure you have activated Use India GST in **Advance Functionalities** section of General Setting.

4. From **General Setting** window, click on **GST** tab.

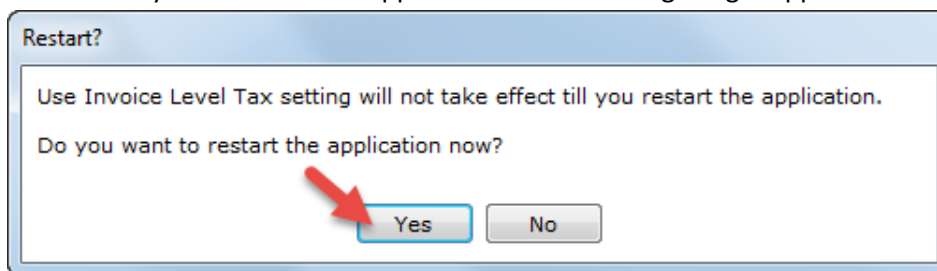




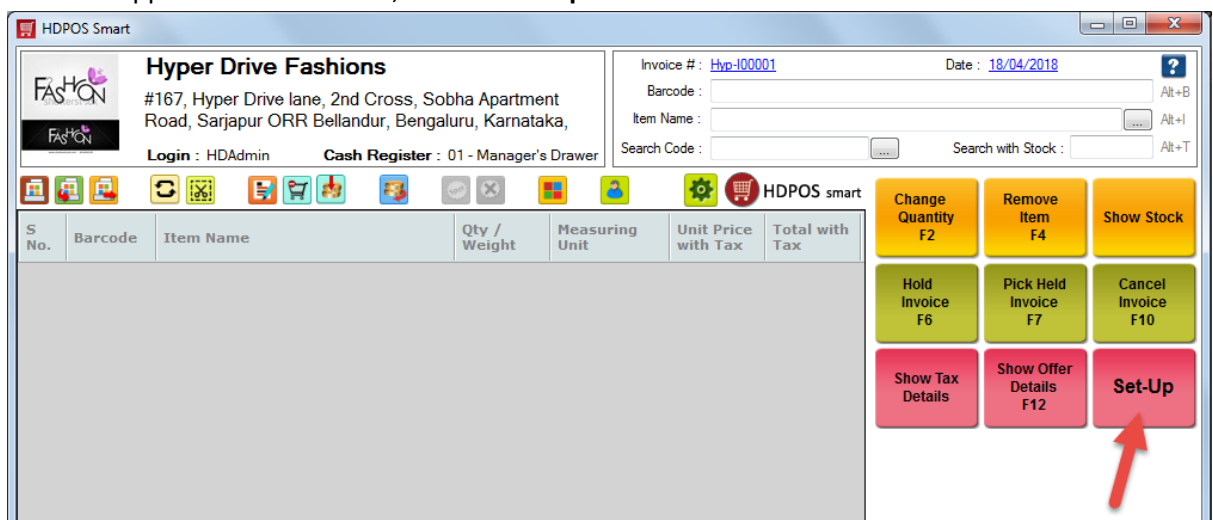
5. In **Invoice Tax** section of GST tab, check 'Use Invoice Level Tax' click on **Apply** button.



6. This will ask you to restart the application for the settings to get applied. Click on **Yes**.

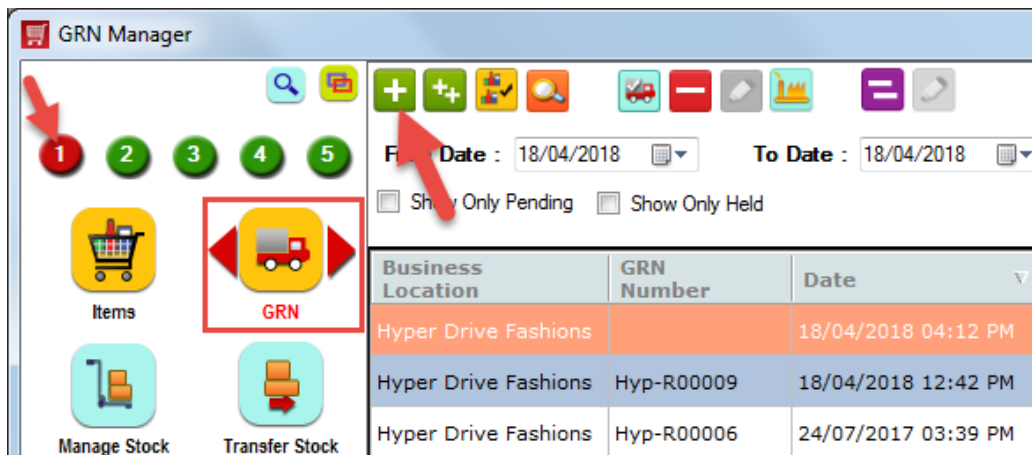


7. Once the application is restarted, click on **Set-Up** button.

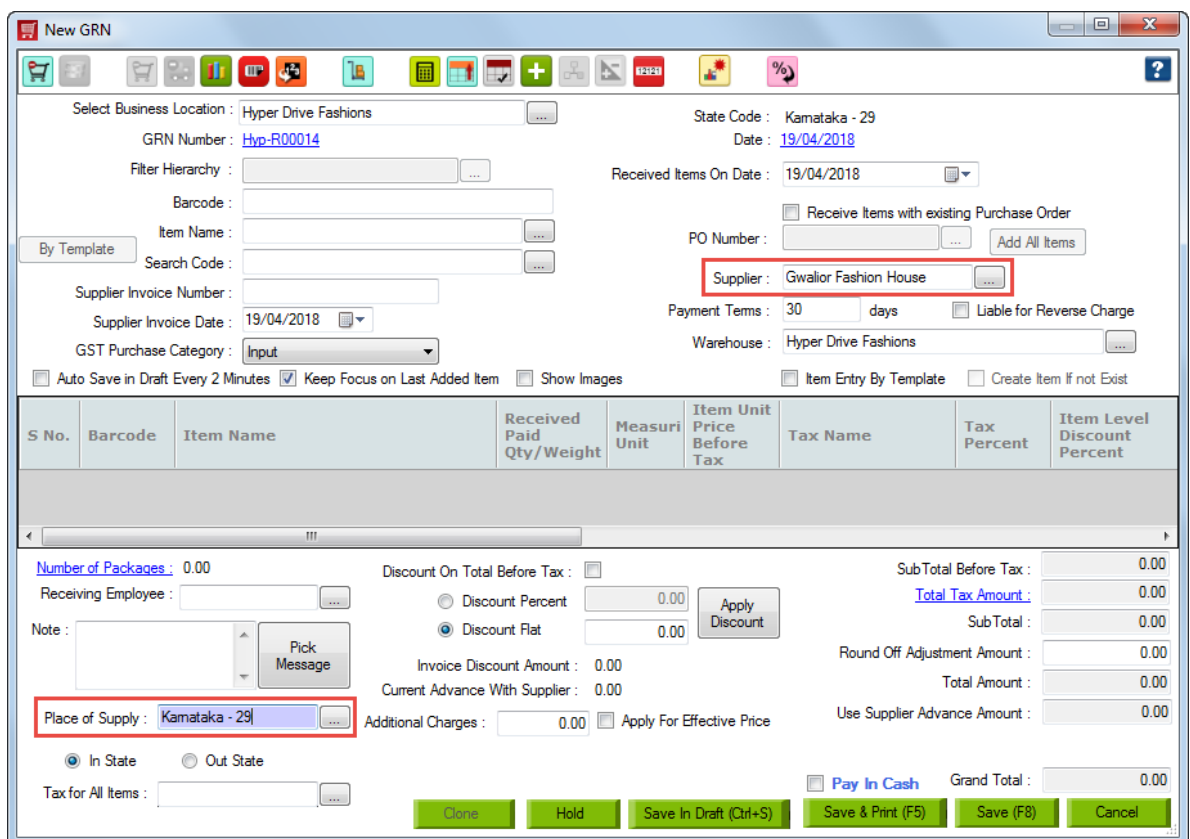




- 8. From 1st page of **Set-Up**, go to **GRN**. Click on **Add Simple GRN** tool strip button.



- 9. Select your **Supplier**. If you have specified the Supplier's place of supply, HDPOS smart will auto-populate the '**Place of Supply**' field. However, you can change the place of supply, if needed.



Note: If you have not specified supplier's place of supply, you can select the place of supply from **Add GRN** screen as required. Make sure you select the right place of supply as per the nature of supply.

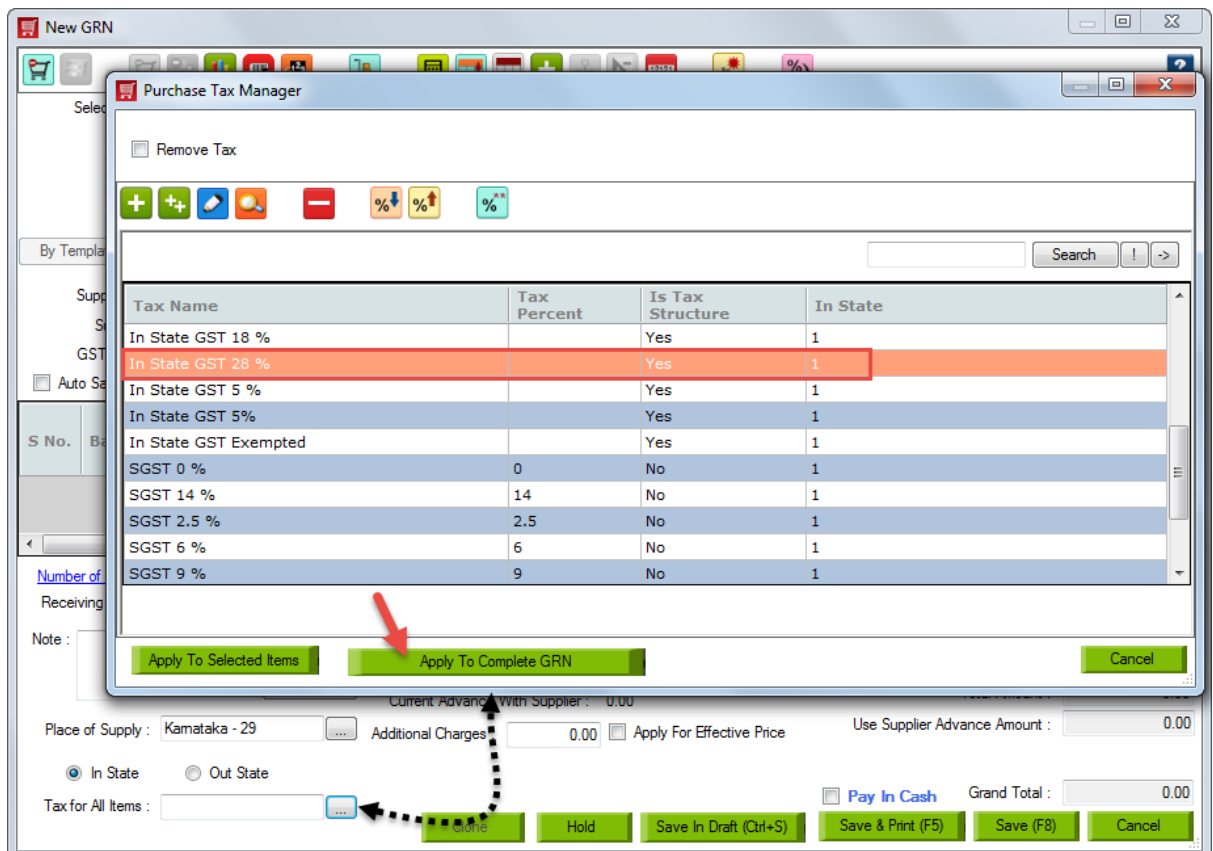




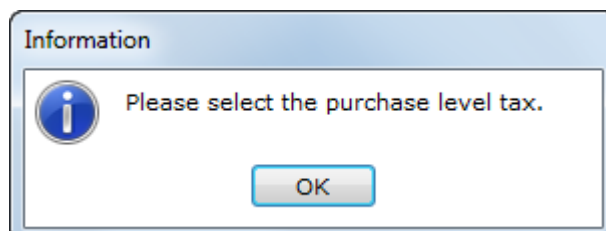
10. Here you will have the option to change the purchase tax based on the type of purchase (In State or Out State).

If the supply of goods or services is within the state, select **In State** radio button or if the supply of goods or service is Out of state then select **Out State** radio button.

Click on 3 dotted button against **Tax For All Items** field, this will open **Purchase Tax Manager** where you will see only the Tax Names that are applicable for In State or Out-State based on the radio button you selected. Click on **Apply To Complete GRN**.



Note: You will not be allowed to select the items/products without selecting the purchase level tax. You will see the below message if you try to add the item/product without selecting tax.





11. Add the items by scanning item code or by item name. Enter the required details like Received Paid Qty/Weight, Item Unit Price Before Tax, Supplier Invoice Number etc.

The screenshot shows the 'New GRN' window with the following details:

- Select Business Location: Hyper Drive Fashions
- State Code: Karnataka - 29
- GRN Number: Hyp-R00014
- Date: 19/04/2018
- Received Items On Date: 19/04/2018
- Supplier: Gwalior Fashion House
- Supplier Invoice Date: 19/04/2018
- Supplier Invoice Number: (empty)
- Payment Terms: 30 days
- Warehouse: Hyper Drive Fashions
- GST Purchase Category: Input

| S No. | Barcode | Item Name | Received Paid Qty/Weight | Measuri Unit | Item Unit Price Before Tax | Tax Name | Tax Percent | Item Level Discount Percent |
|-------|---------|--|--------------------------|--------------|----------------------------|-------------------|-------------|-----------------------------|
| 1 | T00041 | 9rasa Black Flared Skirt M | 5 | Qty | 1,683.93 | In State GST 28 % | 0.00 | 0 |
| 2 | T00053 | 9rasa Red Flared Skirt M | 5 | Qty | 2,042.21 | In State GST 28 % | 0.00 | 0 |
| 3 | T00070 | American Swan Yellow Solid Sweater M | 5 | Qty | 529.47 | In State GST 28 % | 0.00 | 0 |
| 4 | T00079 | Athena Red Colored Embellished Maxi D... | 5 | Qty | 606.63 | In State GST 28 % | 0.00 | 0 |

Summary Totals:

- Sub Total Before Tax: 21,884.68
- Total Tax Amount: 6,127.71
- Sub Total: 28,012.39
- Total Amount: 28,012.39

Buttons: Clone, Hold, Save In Draft (Ctrl+S), Save & Print (F5), Save (F8), Cancel

12. Purchase Level Tax you have selected will be applicable to all the items/products that you add in. However you can change the tax as required and click on **Save** button.

Note: If selected place of supply is different than business location's place of supply, you will see the information as shown below. You can continue save GRN by clicking on **Yes**.

Information

In order to make GST compliant "GRN", you need to make this "GRN" as "Out State" GRN. This is required because your supplier is in different state than your Business Location. Do you want to continue ?

Buttons: Yes, No

